



# 2023

## WBA 1A/2A/3A Championships Information Packet

**Class Championships**  
**Saturday, November 18, 2023**

**Grand Championships**  
**Sunday, November 19, 2023**

**Location:**

*Charles C. Hughes Stadium  
Sacramento City College  
3835 Freeport Boulevard  
Sacramento, CA 95822*

## **WELCOME MESSAGE**

On behalf of the entire Western Band Association (WBA) team, welcome to the culminating events of another memorable season! We look forward to seeing peak performances at all our locations in the greater Sacramento area this weekend. Should you have any questions, please feel free to contact the Event Manager listed below. Best of luck and good skill to all performers!

### ***Important Contact***

Brian Nunez – Event Manager: (818) 967-1034

## **WEATHER**

As standard practice, WBA monitors the forecast for all events throughout the season. WBA does have weather plans in place as outlined in the [Policies & Procedures](#) document on the website. In the event of inclement weather, WBA will contact directors by text message, email, Facebook, and the website. Announcements will also be made on the [Event Page](#) and in the stadium.

## **DIRECTIONS TO THE STADIUM**

Traveling from any direction, take I-5 or SR-99 towards the Stadium:

- If taking SR-99 Freeway, exit Sutterville Road / 12th Avenue westbound. Turn right (north) onto Panther Parkway. Please see the enclosed map and follow the parking instructions.
- If taking I-5 Freeway, exit Sutterville Road eastbound. At the “T”, turn left (north) onto Freeport Boulevard. Turn right (east) onto Sutterville Road. Turn left (north) onto Panther Parkway. Please see the enclosed map and follow the parking instructions.

## **BUS / TRUCK PARKING**

Parking for Buses / Trucks will open three hours before the start of the event. Bus and equipment vehicles will enter via Sutterville Road and will park in NORTH LOT. Ensembles must check-in at the WBA Check-In table located at the entrance to the North Lot upon arrival. WBA parking attendants will be onsite to organize parking. This lot is only for bus, equipment, and support vehicles. Please refrain from playing in this area.

## **SPECTATOR PARKING**

Parking for Spectators will open two hours before the start of the event. Spectators will enter via Sutterville Road and will park in the PAS parking structure. Please pay at the parking meters located inside the structure.

## **WBA EVENT STAFF / JUDGES / VIP PARKING**

WBA Staff, Judges and VIPs will enter via Sutterville Road and will park in the lot located against the stadium to your right as you enter the property. A sign will mark the entrance to the lot.

## **CHECK-IN**

Please refer to the enclosed map. The Director's bag will include student wristbands, souvenir patches, a complimentary gift, and additional information for the day.

## **WBA CREDENTIALS & WRISTBANDS**

School staff and volunteers are required to use their WBA staff passes issued to them earlier at the beginning of the season. All WBA credentials are good for entrance into the stadium. Upon re-entry, we ask that only Directors and Staff sit in premier seating, all others should sit at the 30 yard line and out. WBA Field Passes allow access to the field to assist with the performance. Any chaperone or front ensemble or prop helper without a credential or wristband will be asked to purchase a ticket for entrance into the stadium.

## **ADMISSION & PROGRAMS**

Admission can be purchased onsite and [online](#). Tickets are \$30 for Adults, \$25 for Military, \$20 for Children 5-12 years and Free for Children 5 and under. Programs are \$10. Additional information:

- Cash and Credit Card Accepted at gate
- Tickets are good for both days at all venues
- 1 wristband per person
- **Keep your wristbands on for access on both days**
- Price stays the same whether you buy on Saturday or Sunday
- Each ticket will come with a wristband
  - If you bought online, please head to the pre-purchased line to get a wristband

## **WARM UP AREAS & SILENT ZONES**

Please refer to the enclosed map. The use of Dr. Beats with speakers (e.g. Megavox, Long Ranger), jam blocks, or other time keeping devices, and the use of megaphone/amplification devices cannot interfere with the performances occurring in the stadium. Any ensemble disrupting a competing ensemble in the stadium by using these devices during their warm-up will face a ONE POINT penalty to be assessed by the Chief Adjudicator. Please respect your surroundings.

## **PROP PRE-STAGING AREA**

Please refer to the enclosed map. Props and pre-staging are located along the back of the stadium. Please ensure that your props do not block the path to ensemble entrance. Tennis courts are not open to our event.

## **STAGING AREA**

Please refer to the enclosed map. Pre-staging is located along the back of the stadium. Tennis courts are not open to our event.

## **ROUTE TO WARM UP AREA**

Please see the following to preview your walk from the North lot to the warm-up area:

[https://drive.google.com/file/d/1kLKO3wrJY0TNzVsf1HFXS3qC4s\\_VGf4v/view?usp=sharing](https://drive.google.com/file/d/1kLKO3wrJY0TNzVsf1HFXS3qC4s_VGf4v/view?usp=sharing)

## **ENSEMBLE ENTRY**

**The entry area (north tunnel) has a vertical limit of 10 feet.** If you have props or equipment taller than that, please arrive at the gate with said items with plenty of time to disassemble them down to the level needed to clear the limit, push them through, and reassemble them. You may stage your props on the track side 1 front as far away from the field as possible no more than 15 minutes before your ensemble performs.

## **STAFF VIEWING & SOUND MIXING AREA**

There will be a section reserved for staff viewing and sound mixing. Stadium access from the track/field will be available.

## **ADJUDICATION COMMENTS**

Commentary will be provided through Competition Suite.

## **AWARDS CEREMONY**

### **Class Championships (Saturday, November 18, 2023):**

The representatives for Class Championships awards ceremony will consist of Leaders and Seniors. Please meet with WBA Staff outside of the Band Exit Gate. WBA Staff will walk Leaders and Seniors to the entrance of the field. At the conclusion of the awards ceremony, the leaders and seniors will exit the Band Exit Gate.

- Class 1A schools – please report to the Band Exit Gate no later than 1:00pm
- Class 2A schools – please report to the Band Exit Gate no later than 4:30pm
- Class 3A schools – please report to the Band Exit Gate no later than 8:30pm

The awards given during this ceremony are as follow:

- 1st Place in Each Class will receive a Championship Banner and Medals
- Best Music in Each Class: Music Individual + Music Ensemble
- Best Visual in Each Class: Visual Individual + Visual Ensemble
- Best Effect in Each Class: Effect Music + Effect Visual
- Best Color Guard in Each Class: Color Guard
- Best Percussion in Each Class: Percussion

### **Grand Championships (Sunday, November 19, 2023):**

As a way to celebrate another great season for WBA, we ask that all performers participate in this Full Retreat Ceremony. Performers should report in full uniform without instruments and equipment. Please refer to the enclosed Full Retreat Map and line-up as directed the WBA Staff.

All Schools – please report no later than 6:00pm. Full ensembles will meet at the edge / bottom portion of LOT N closest to the parking structure. WBA Staff will organize ensembles in order of performance. At the conclusion of the awards ceremony, the schools will exit the Band Exit Gate.

The awards given during this ceremony are as follow:

- 1st Place, 2nd Place and 3rd Place will receive Medals
- 1st Place will receive a Championship Banner
- Best Music: Music Individual + Music Ensemble
- Best Visual: Visual Individual + Visual Ensemble
- Best Effect: Effect Music + Effect Visual
- Best Color Guard: Color Guard
- Best Percussion: Percussion

## **GRAND CHAMPIONSHIPS FINALISTS**

The top 5 highest scoring schools in each class plus the next 5 highest scoring schools regardless of class advance to Grand Championships on Sunday, November 19, 2023. The performance order for Grand Championships will be determined by reverse score order from the Class Championships scores regardless of class (lowest will go first and highest will go last). In the event of a tie, an additional school will be invited to perform in Grand Championships.

## **CRITIQUE**

There will not be Critique available at this event.

## **HOSPITALITY**

Hospitality will be located at the south end of the stadium. Lunch, dinner, and snacks will be provided to you and your staff. Admission to this area will be permitted to those who have an official WBA Director or Staff Pass only.

## **FIELD SETUP & HASH MARKS:**

Yard markers will be setup on both sides of the field. An extension cord with power will be provided at the front sideline on the 50 yard line. The stadium has an artificial turf field with college hash marks. We will place the high school hash marks on the field in tape.

## **RESTROOMS**

Portable bathrooms will be available for performers in the bus lot. Stadium bathrooms will be available for spectators.

## **SPECTATOR SEATING**

All seating is general admission seating and open for spectators, minus areas blocked off.

## **STUDENT & CHAPERONE SEATING**

Performers will be seated on the home side of the Stadium with re-entrance allowed with a performer wristband. Please sit between the end zone and the 30 yard line to allow paying fans the best seats.

## **TRASH & RECYCLE DISPOSAL**

Every effort is made to provide trash containers that are easy to locate and accessible. Please remind your students to use these receptacles when disposing of all trash. Also, you may use the recycle bins located throughout the campus.

## **TOBACCO AND ALCOHOL BEVERAGES**

Absolutely no smoking or alcoholic beverages are permitted on the premises at any time. Please review this very important rule with your students, staff, and booster parents.

## **FIRST AID**

First aid will be available on the field.

## **LOST & FOUND**

Found items should be given to a WBA Representative at the box office.

## **CONCESSIONS**

Cash and Credit are accepted at most locations in the stadium. **No outside food is allowed inside the stadium. No grills or open flames are allowed on the campus at anytime.**

## **MERCHANDISE**

PepWear will be onsite selling Championships souvenir and apparel. Cash and Credit Cards will be accepted.

## **PHOTOGRAPHY & VIDEO**

WBA has been advised that the director's educational copy provided to each group at past championships is contrary to the position of music rights holders and licensing agencies who represent them. There remain unresolved legal questions with regards to "fair use" in this situation. WBA has decided not to provide educational copies to groups participating at this year's championships until further discussions can occur in the hopes of finding a solution that is acceptable to all parties.

Any liability associated with unauthorized recordings will rest with the individual or organization making the recording. WBA does not condone, nor accept any liability for, any unauthorized recording during the event.

Use of cameras of any kind are NOT ALLOWED on the field for this event. Please communicate this to your parent/booster group.

Still cameras (digital or film, professional or otherwise) are allowed into the stadium and may be used from stadium seating, but not on the field, by a person with a WBA Media credential.

Tripods or other similar equipment that may obstruct the view or path of travel of others in seating areas are not allowed.

## **AIRGRAMS**

Airgrams will not be sold at this event.

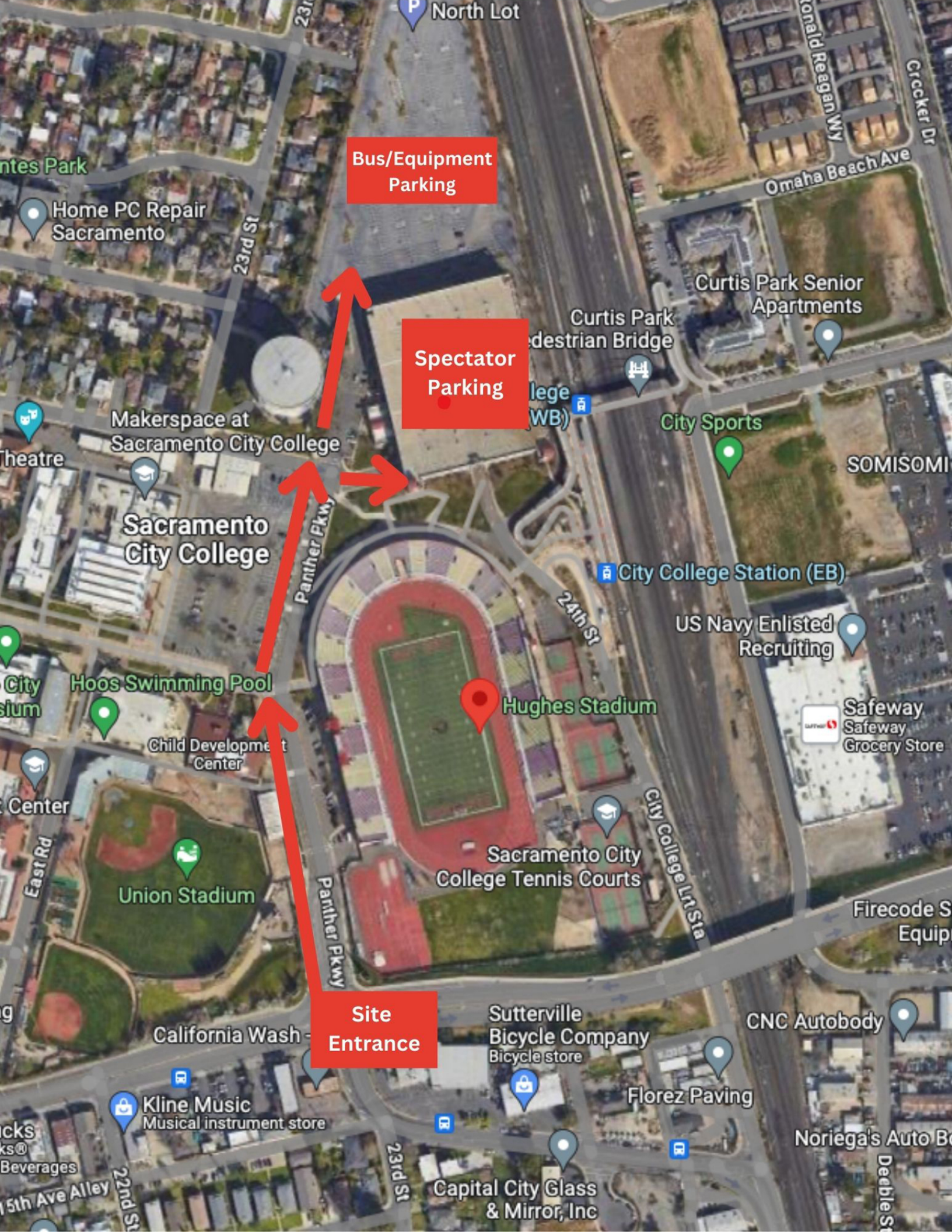


**2023 WBA 1A/2A/3A  
Grand Championships  
Sunday, November 19, 2023**



**Retreat Setup: Full Band Retreat**

<b>Finalist #20 (12:05pm)</b>	<b>Finalist #18 (12:35pm)</b>	<b>Finalist #16 (1:05pm)</b>	<b>Finalist #14 (1:45pm)</b>	<b>Finalist #12 (2:15pm)</b>	<b>Finalist #10 (3:30pm)</b>	<b>Finalist #8 (4:00pm)</b>	<b>Finalist #6 (4:30pm)</b>	<b>Finalist #4 (5:10pm)</b>	<b>Finalist #2 (5:40pm)</b>	<b>Finalist #1 (5:55pm)</b>	<b>Finalist #3 (5:25pm)</b>	<b>Finalist #5 (4:55pm)</b>	<b>Finalist #7 (4:15pm)</b>	<b>Finalist #9 (3:45pm)</b>	<b>Finalist #11 (2:30pm)</b>	<b>Finalist #13 (2:00pm)</b>	<b>Finalist #15 (1:30pm)</b>	<b>Finalist #17 (12:50pm)</b>	<b>Finalist #19 (12:20pm)</b>
-------------------------------	-------------------------------	------------------------------	------------------------------	------------------------------	------------------------------	-----------------------------	-----------------------------	-----------------------------	-----------------------------	-----------------------------	-----------------------------	-----------------------------	-----------------------------	-----------------------------	------------------------------	------------------------------	------------------------------	-------------------------------	-------------------------------



**Bus/Equipment  
Parking**

**Spectator  
Parking**

**Site  
Entrance**

**Sacramento  
City College**

**Hughes Stadium**

**Union Stadium**

**Kline Music  
Musical instrument store**

**Sutterville  
Bicycle Company  
Bicycle store**

**CNC Autobody**

**Capital City Glass  
& Mirror, Inc**

**Florez Paving**

**Noriega's Auto B...**

**Makerspace at  
Sacramento City College**

**Curtis Park  
Pedestrian Bridge**

**Curtis Park Senior  
Apartments**

**City College Station (EB)**

**US Navy Enlisted  
Recruiting**

**Safeway  
Safeway  
Grocery Store**

**Child Development  
Center**

**Sacramento City  
College Tennis Courts**

**Firecode S  
Equip**

**California Wash**

**Sutterville  
Bicycle Company  
Bicycle store**

**CNC Autobody**

**Capital City Glass  
& Mirror, Inc**

**Florez Paving**

**Noriega's Auto B...**

**Makerspace at  
Sacramento City College**

**Curtis Park  
Pedestrian Bridge**

**Curtis Park Senior  
Apartments**

**City College Station (EB)**

**US Navy Enlisted  
Recruiting**

**Safeway  
Safeway  
Grocery Store**

**Child Development  
Center**

**Sacramento City  
College Tennis Courts**

**Firecode S  
Equip**

**California Wash**

**Sutterville  
Bicycle Company  
Bicycle store**

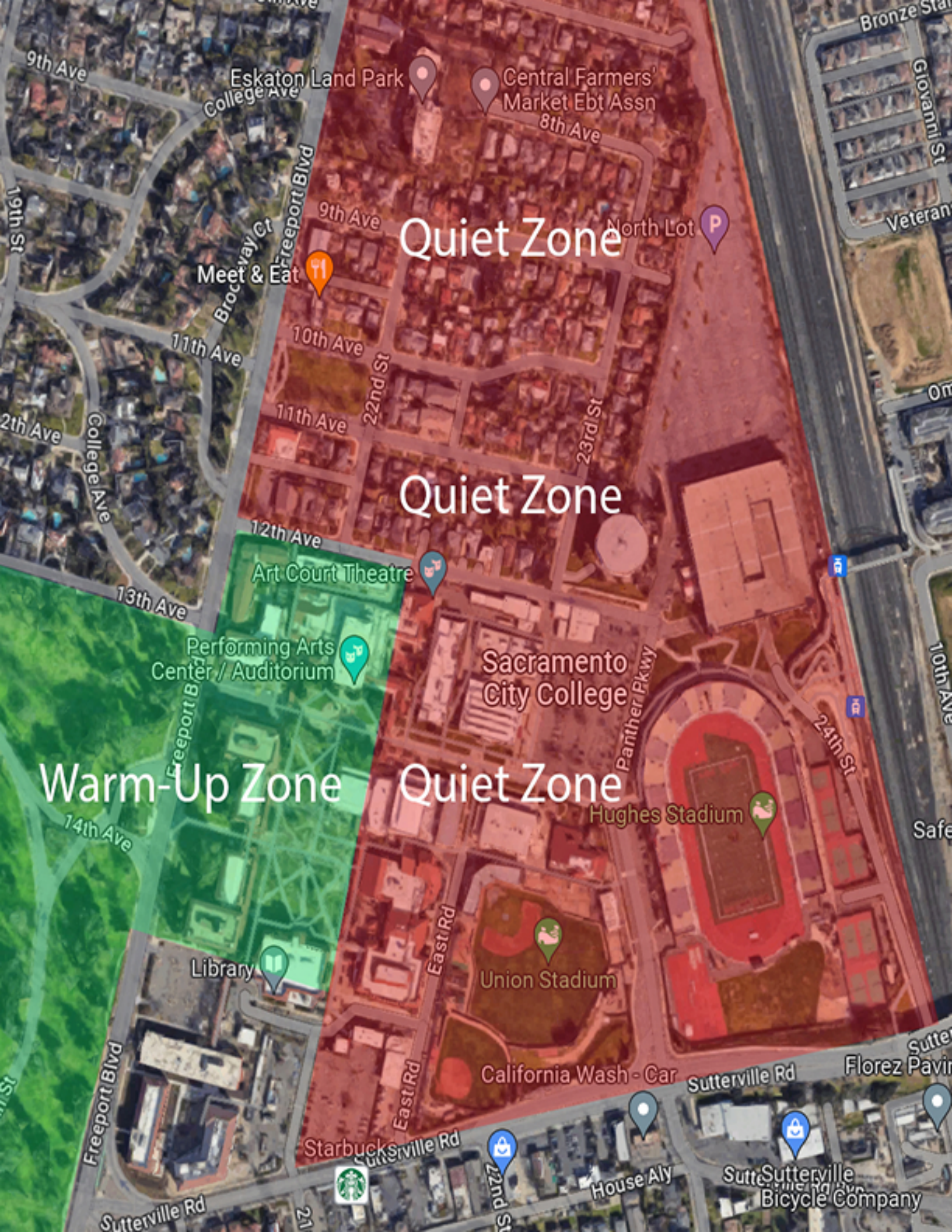
**CNC Autobody**

**Capital City Glass  
& Mirror, Inc**

**Florez Paving**

**Noriega's Auto B...**



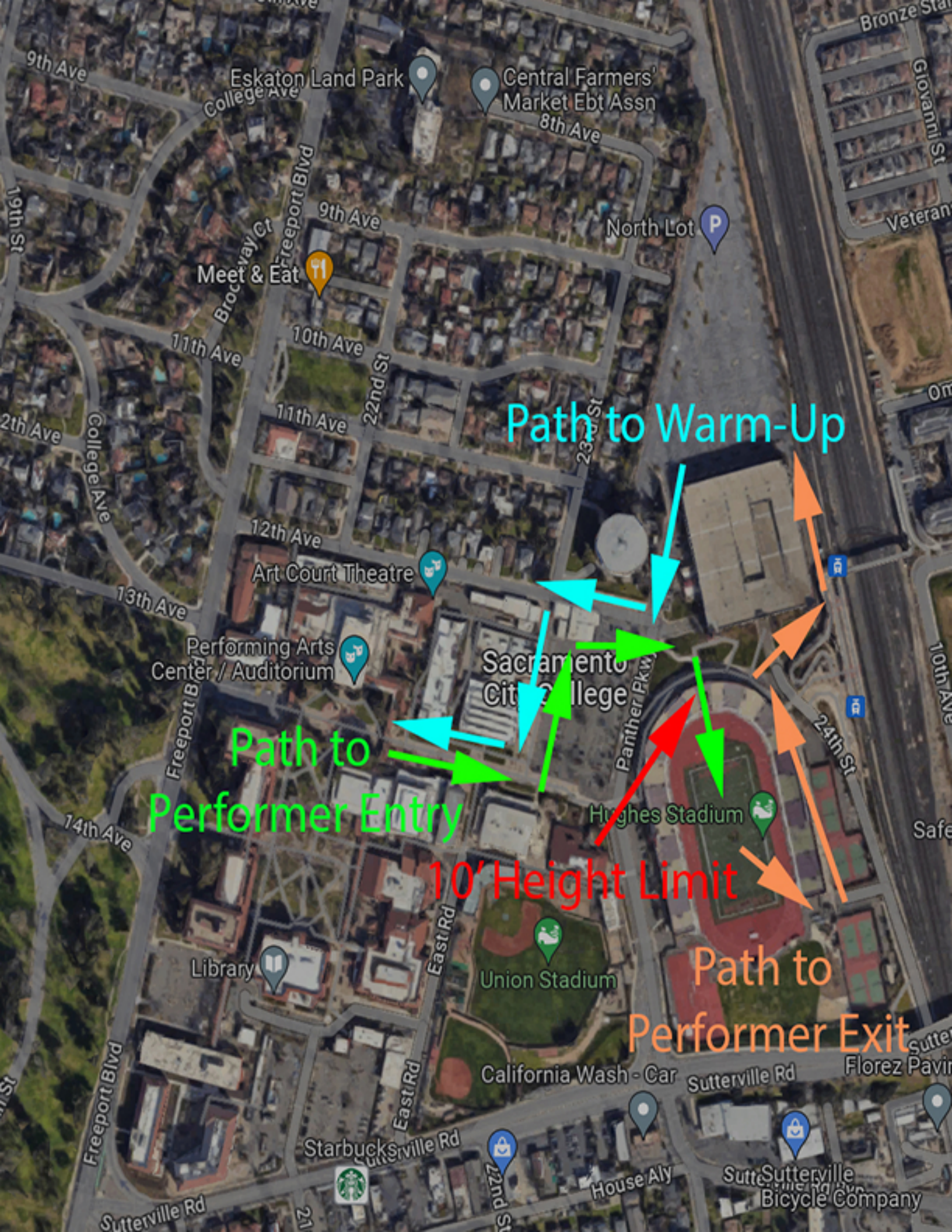


Quiet Zone

Quiet Zone

Warm-Up Zone

Quiet Zone



Path to Warm-Up

Path to Performer Entry

10' Height Limit

Path to Performer Exit



Box Office →

Pepwear  
&  
Concessions →

# SACRAMENTO CITY COLLEGE

3835 Freeport Blvd.  
Sacramento, CA 95822  
www.scc.losrios.edu

- BUS** Business Building  
Business Division - 213, Career Services - 153
- CDC** Child Development Center  
Classrooms, Preschool
- CIC** City Café
- COS** Cosmetology Building
- CST** College Store  
Bookstore
- DAC** Davis Center  
1720 Jade Street, Davis, CA 95616
- DCA** Daubert Courtyard for the Arts
- FFA** Fischbacher Fine Arts Building  
Gregory Kondos Art Gallery, Art classes & Studios
- HSP** Hoos Swimming Pool  
KHA (Kinesiology, Health and Athletics) classes, Intercollegiate Swimming and Water Polo

- HUS** Hughes Stadium  
KHA (Kinesiology, Health and Athletics) classes, Intercollegiate Football, Track & Field and Soccer
- LRC** Learning Resource Center  
**First Floor:** Distance Education and Instructional Development, Instruct. Media and Computing, Media Production & Services, Learning Skills and Tutoring Center, Staff Resource Center -106  
**Second Floor:** Library, Library Reference Desk, Computer Services, Learning Resources Academic Computing Lab  
**Third Floor:** Special Collections Room (Archives)
- LRP** Los Rios Police Department  
Staff parking permits, lost and found, crime reports, Live Scan fingerprinting, bicycle and property Registration, Employee IDs
- LUC** Lusk Center  
Engineering and Math Classes, Mechanical-Electrical Technology Department
- MAK** Makerspace
- MCC** McClellan Hangar (Bldg. 28) & McClellan Academic Facility (Bldg. 39)  
5808 Price Avenue, McClellan, CA 95652
- MOH** Mohr Hall  
Science and Allied Health Division Office, Nursing, Occupational Therapy Assisting, Physical Therapist Assistant, Physics, Geology, Astronomy
- NAS** Natural Sciences Building  
Science classes
- NOG** North Gymnasium  
Life Fitness Center, Gymnasium
- OPS** Operations  
Keys, Facility Use and Rentals, Facilities Repair/Maintenance Coordination
- PAC** Performing Arts Center  
Art Court Theatre, Little Theatre, Main Stage, Classrooms, Music, Veterans Resource Center (VRC) - 101 & 102

- PAN** Panther Cares
- PAS** Parking Structure
- REP** Reprographics  
Duplicating, Graphic Impressions
- RHN** Rodda Hall - North  
**First floor:** Business Services Office, Dean of Counseling and Student Success - 111, EOPS/CARE, Financial Aid, Information & Orientation, Counseling Area: Career Center, Counseling, Health Center, Transfer Center, Work Experience.  
**Second Floor:** Behavioral and Social Sciences Division - 226, Vice President of Administrative Services - 269, Vice President of Instruction - 257, Vice President of Student Services - 272, Planning, Research & Institutional Effectiveness - 221, President's & Public Information Offices - 277  
**Third Floor:** Math, Statistics & Engineering Division, Math Classrooms and Offices
- RHS** Rodda Hall - South  
**First Floor:** Dental Clinic, Math Lab, MESA, Math Classrooms, RISE Program - 158  
**Second Floor:** Language & Literature Division, Classrooms  
**Third Floor:** ESL Center, Reading Lab  
**Fourth Floor/Rooftop:** Observatory
- SOC** Softball Complex
- SOG** South Gymnasium  
Associated Student Government - 226, Cultural Engagement Centers: Pride Center, Native American Student Program, Asian Pacific Islander (API) Center - 234, Dean of Engagement and Completion - 226, Matriculation, Student Leadership & Development - 226
- STC** Student Center  
RAZA Center/Puente Project, ASHÉ Center/Umoja-SBA Program - 104
- STS** Student Services  
**First Floor:** Admissions & Records, Assessment Center, Associate Vice President of Enrollment and Student Services, College 2 Career, Deaf Services, Disability Services and Programs for Students (DSPS), HSI Program, International Student Center, Outreach and Recruitment, Registration and Financial Aid Lab, Workability  
**Second Floor:** Journalism Department & Classrooms, Photography Department & Studio
- TEC** Technology  
Design Lab, D&DM classes
- UNS** Union Stadium
- VEC** Vehicle Compound
- WSC** West Sacramento Center  
1115 West Capitol Ave., West Sacramento, CA 95691

- Parking Permit Machines  
(Daily parking permit machines available on the 2nd, 3rd, and 4th floors of the parking structure)
- AED Locations
- Bike Lockers
- Campus Directories
- Drop-Off Zone (no waiting)
- Emergency Phones
- Motorcycle Parking
- Parking Lot Entrances
- Parking Lot Entrances Only/ No Exit
- Parking Lot Exit Only/ No Entrance
- Parking for Persons with Disabilities
- Bus Stops
- All Gender Restrooms
- Lactation Area
- Electric Vehicle Charging Stations





# 2023 WBA 4A/5A Championships Information Packet

**Class Championships**  
**Saturday, November 18, 2023**

**Location:**  
*Cosumnes Oaks High School*  
*8350 Lotz Parkway*  
*Elk Grove, CA 95757*

## **WELCOME MESSAGE**

On behalf of the entire Western Band Association (WBA) team, welcome to the culminating events of another memorable season! We look forward to seeing peak performances at all our locations in the greater Sacramento area this weekend. Should you have any questions, please feel free to contact the Event Manager listed below. Best of luck and good skill to all performers!

## **Important Contact**

Brian Fisher – Event Manager: 727-460-6431, [bfisher@bdperformingarts.org](mailto:bfisher@bdperformingarts.org)

## **WEATHER**

As standard practice, WBA monitors the forecast for all events throughout the season. WBA does have weather plans in place as outlined in the [Policies & Procedures](#) document on the website. In the event of inclement weather, WBA will contact directors by text message, email, Facebook, and the website. Announcements will also be made on the [Event Page](#) and in the stadium.

## **DIRECTIONS TO THE STADIUM**

Traveling from any direction, take I-5 or SR-99 towards the general Elk Grove area:

- From I-5 Freeway, exit Elk Grove Boulevard East. Turn right (south) on Big Horn Boulevard. Turn left (east) on Lotz Parkway. Turn right on Wolf Pack Lane and follow parking signs.
- From SR-99 Freeway, exit Elk Grove Boulevard West. Take Elk Grove Boulevard westward to Laguna Springs Drive, turn left (south). Follow that road until it turns into Wolf Pak Lane and follow parking signs.

## **BUS / TRUCK PARKING**

Please refer to the enclosed map for bus and truck parking. Busses enter from Wolf Pack Lane and proceed to parking area #1 first if no room then proceed to area #2. PLEASE be aware that space is very limited, and we would like everyone to have some space. PLEASE do not spread out any further than absolutely necessary.

## **SPECTATOR PARKING**

Please refer to the enclosed map. Please enter from Wolf Pack Lane.

## **WBA EVENT STAFF / JUDGES / VIP PARKING**

Please refer to the enclosed map. Please park in the first row marked for visitors.

## **CHECK-IN**

Please refer to the enclosed map. The Director's bag will include student wristbands, souvenir patches, a complimentary gift, and additional information for the day.

## **WBA CREDENTIALS & WRISTBANDS**

School staff and volunteers are required to use their WBA staff passes issued to them earlier at the beginning of the season. All WBA credentials are good for entrance into the stadium. Upon re-entry, we ask that only Directors and Staff sit in premier seating, all others should sit at the 30 yard line and out. WBA Field Passes allow access to the field to assist with the performance. Any chaperone or front ensemble or prop helper without a credential or wristband will be asked to purchase a ticket for entrance into the stadium.

## **ADMISSION & PROGRAMS**

Admission can be purchased onsite and [online](#). Tickets are \$30 for Adults, \$25 for Military, \$20 for Children 5-12 years and Free for Children 5 and under. Programs are \$10. Additional information:

- Cash and Credit Card Accepted at gate
- Tickets are good for both days at all venues
- 1 wristband per person
- **Keep your wristbands on for access on both days**
- Price stays the same whether you buy on Saturday or Sunday
- Each ticket will come with a wristband
  - If you bought online, please head to the pre-purchased line to get a wristband

## **WARM UP AREAS & SILENT ZONES**

Please refer to the enclosed map. The use of Dr. Beats with speakers (e.g. Megavox, Long Ranger), jam blocks, or other time keeping devices, and the use of megaphone/amplification devices cannot interfere with the performances occurring in the stadium. Any ensemble disrupting a competing ensemble in the stadium by using these devices during their warm-up will face a ONE POINT penalty to be assessed by the Chief Adjudicator. Please respect your surroundings.

## **PROP PRE-STAGING AREA**

Prop Staging is along the lane on the east side of the stadium.

## **STAGING AREA**

Staging is on the east side of the stadium by the Band Entrance and Exit Gate.

## **STAFF VIEWING & SOUND MIXING AREA**

Staff Viewing & Sound Mixing Area is on the landing next to the south end of the press box.

## **ADJUDICATION COMMENTS**

Commentary will be provided through Competition Suite.

## **AWARDS CEREMONY**

### **Class Championships (Saturday, November 18, 2023):**

The representatives for Class Championships awards ceremony will consist of Leaders and Seniors.

- Class 4A school – please report to the Band Entrance Gate no later than 5:00pm
- Class 5A school – please report to the Band Entrance Gate no later than 8:30pm

The awards given during this ceremony are as follow:

- 1st Place in Each Class will receive a Championship Banner and Medals
- Best Music in Each Class: Music Individual + Music Ensemble
- Best Visual in Each Class: Visual Individual + Visual Ensemble
- Best Effect in Each Class: Effect Music + Effect Visual
- Best Color Guard in Each Class: Color Guard
- Best Percussion in Each Class: Percussion

## **GRAND CHAMPIONSHIPS FINALISTS**

The top 5 highest scoring schools in each class plus the next 10 highest scoring schools regardless of class advance to Grand Championships on Sunday, November 19, 2023. The performance order for Grand Championships will be determined by reverse score order from the Class Championships scores regardless of class (lowest will go first and highest will go last). In the event of a tie, an additional school will be invited to perform in Grand Championships.

## **CRITIQUE**

There will not be Critique available at this event.

## **HOSPITALITY**

Director and staff hospitality will be located on the south side of the HD building directly southwest of the field.

## **FIELD SETUP & HASH MARKS:**

Yard markers will be setup on both sides of the field. An extension cord with power will be provided at the front sideline on the 50 yard line. The stadium has an artificial turf field with high school hash marks on the field in tape.

## **RESTROOMS**

Stadium bathrooms will be available for spectators.

## **SPECTATOR SEATING**

All seating is general admission seating and open for spectators, minus areas blocked off.

## **STUDENT & CHAPERONE SEATING**

Performers will be seated on the home side of the Stadium with re-entrance allowed with a performer wristband. Please sit between the end zone and the 30 yard line to allow paying fans the best seats.

## **TRASH & RECYCLE DISPOSAL**

Every effort is made to provide trash containers that are easy to locate and accessible. Please remind your students to use these receptacles when disposing of all trash. Also, you may use the recycle bins located throughout the campus.

## **TOBACCO AND ALCOHOL BEVERAGES**

Absolutely no smoking or alcoholic beverages are permitted on the premises at any time. Please review this very important rule with your students, staff, and booster parents.

## **FIRST AID**

First aid will be available onsite.

## **LOST & FOUND**

Found items should be given to a WBA Representative.

## **CONCESSIONS**

The Concession Stands open at xx:xx am. Cash and Credit are accepted at most locations in the stadium. **No outside food is allowed inside the stadium. No grills or open flames are allowed on the campus at anytime.**



## **MERCHANDISE**

PepWear will be onsite selling Championships souvenir and apparel. Cash and Credit Cards will be accepted.

## **PHOTOGRAPHY & VIDEO**

WBA has been advised that the director's educational copy provided to each group at past championships is contrary to the position of music rights holders and licensing agencies who represent them. There remain unresolved legal questions with regards to "fair use" in this situation. WBA has decided not to provide educational copies to groups participating at this year's championships until further discussions can occur in the hopes of finding a solution that is acceptable to all parties.

Any liability associated with unauthorized recordings will rest with the individual or organization making the recording. WBA does not condone, nor accept any liability for, any unauthorized recording during the event.

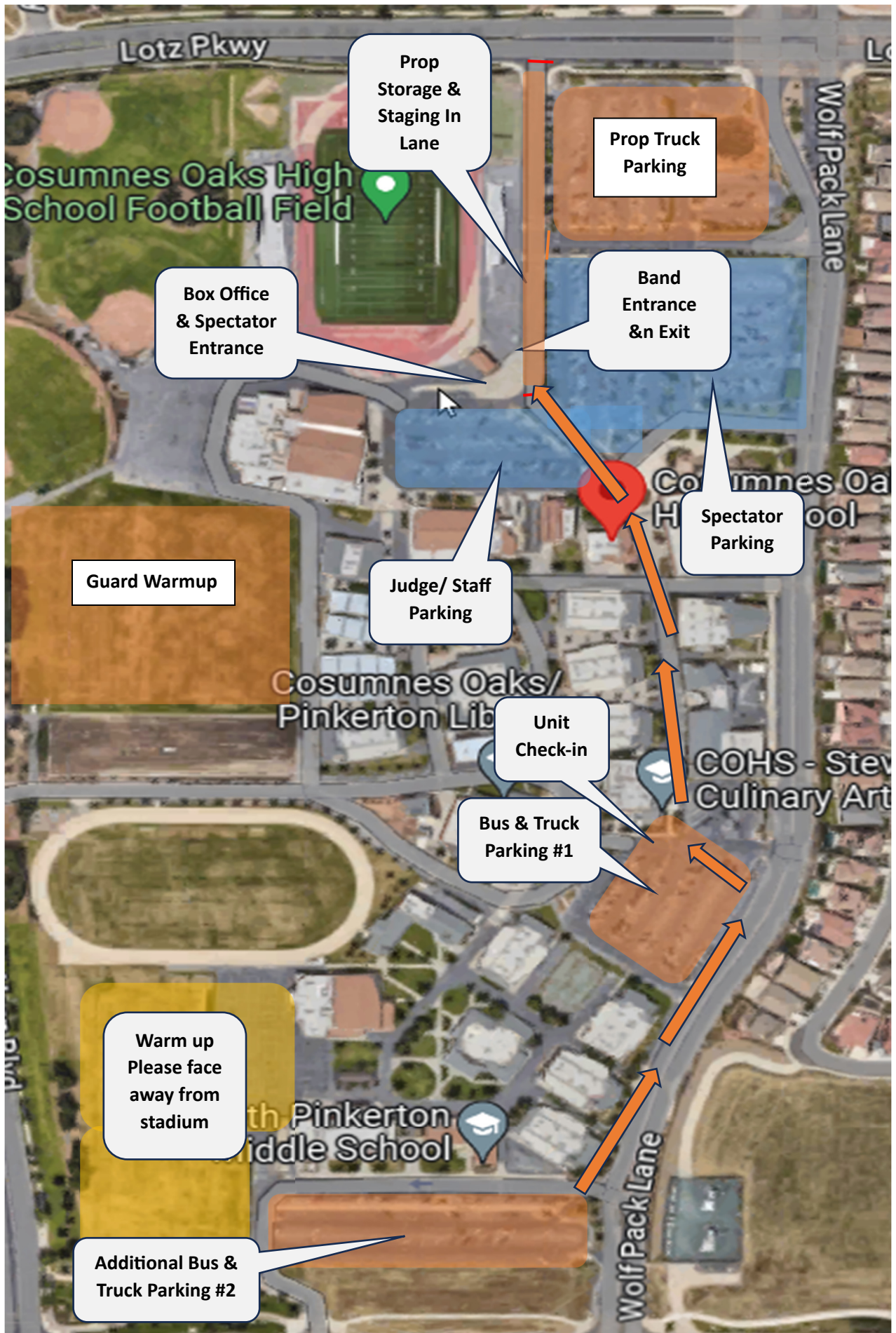
Use of cameras of any kind are NOT ALLOWED on the field for this event. Please communicate this to your parent/booster group.

Still cameras (digital or film, professional or otherwise) are allowed into the stadium and may be used from stadium seating, but not on the field, by a person with a WBA Media credential.

Tripods or other similar equipment that may obstruct the view or path of travel of others in seating areas are not allowed.

## **AIRGRAMS**

Airgrams will not be sold at this event.



Lotz Pkwy

Cosumnes Oaks High School Football Field

Prop Storage & Staging In Lane

Prop Truck Parking

Wolf Pack Lane

Box Office & Spectator Entrance

Band Entrance & n Exit

Guard Warmup

Judge/ Staff Parking

Spectator Parking

Cosumnes Oaks/Pinkerton Lib

Unit Check-in

COHS - Steve Culinary Art

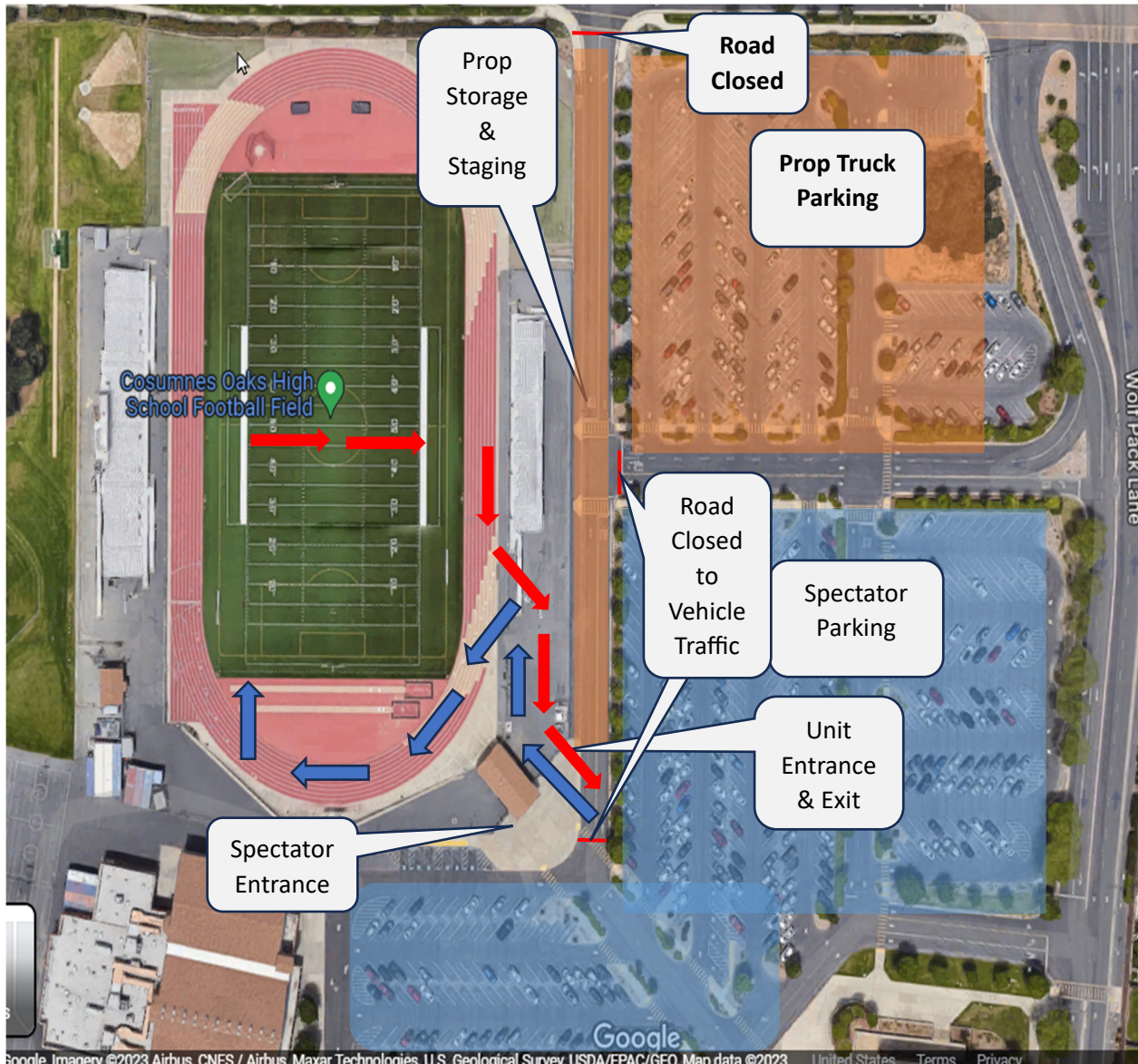
Bus & Truck Parking #1

Warm up Please face away from stadium

Pinkerton Middle School

Additional Bus & Truck Parking #2

Wolf Pack Lane



All prop Pre-Stage and Staging is in the closed lane to the east of the stadium.

Follow **Blue Arrows** for Unit Entrance to performance.

Follow **Red Arrows** for Unit Exit.

Follow **Orange Arrows** to Unit Entrance & Prop Storage for staging.



# 2023 WBA 4A/5A Championships Information Packet

**Grand Championships**  
**Sunday, November 19, 2023**

**Location:**  
*Hornet Stadium*  
*California State University, Sacramento*  
*6000 Jed Smith Drive*  
*Sacramento, CA 95819*

## WELCOME MESSAGE

On behalf of the entire Western Band Association (WBA) team, welcome you to the culminating events of another memorable season! We look forward to seeing peak performances at all our locations in the greater Sacramento area this weekend. Should you have any questions, please feel free to contact the Event Manager listed below. Best of luck and skill to all performers!

## Important Contact

Brian Fisher – Event Manager: 727-460-6431, [bfisher@bdperformingarts.org](mailto:bfisher@bdperformingarts.org)

James Long – Sacramento State Marching Band: 517-230-9099, [j.long@csus.edu](mailto:j.long@csus.edu)

## DIRECTORS

**This is a mandatory.** Please complete before arrival on campus [CLICK HERE](#)

## WEATHER

As standard practice, WBA monitors the forecast for all events throughout the season. WBA does have weather plans in place as outlined in the [Policies & Procedures](#) document on the website. In the event of inclement weather, WBA will contact directors by text message, email, Facebook, and the website. Announcements will also be made on the [Event Page](#) and in the stadium.

## DIRECTIONS TO THE STADIUM

Ensembles and Spectators must enter off Exit 9 from US-50.

- Make sure you are turning Left on College Town Drive
- Ensembles continue straight on College Town Drive until check in at corner at Stadium Drive.
- Spectators **MUST** turn right onto State University Drive, then Left onto White Poplar Way to access Parking Deck 3.

## TRAFFIC CONDITIONS

[CLICK HERE](#) for Traffic Map and [CLICK HERE](#) for area construction

## ROAD CLOSURE

The road is closed to thru traffic, using caution, you can walk on College Town Drive around the back of the stadium (i.e., pushing props, going back to your buses, and crossing over to warm up, etc.) You don't have to cross at the traffic light, the road is open as long as you proceed with caution.

## BUS / TRUCK PARKING

**Turn off Bus AC. It's a Gravel Lot!**

Everyone will follow College Town and stop at check-in, then proceed.

Lot 9 will be used for parking. This lot is gravel and some parking will be available for smaller vehicles under 10ft. There are solar panels, so nothing over 10ft. \*subject to change on arrival if needed

## SPECTATOR PARKING

Parking Structure 3 ONLY, you must park in the parking garage, entrance will be from White Poplar Way. There is **NO FREE** parking on campus. Additional parking details can be found online here: [Parking Information](#). We highly encourage you to follow the instructions below before arriving on campus for the event.

## **CHECK-IN**

Please refer to the enclosed map. Check-in is at the corner of College Town Dr and Stadium Dr, at the traffic light. The Director's bag will include student wristbands, souvenir patches, a complimentary gift and additional information for the day.

## **WBA CREDENTIALS & WRISTBANDS**

School staff and volunteers are required to use their WBA staff passes issued to them earlier at the beginning of the season. All WBA credentials are good for entrance into the stadium. Upon re-entry, we ask that only Directors and Staff sit in premier seating, all others should sit at the 30 yard line and out. WBA Field Passes allow access to the field to assist with the performance. Any chaperone or front ensemble or prop helper without a credential or wristband will be asked to purchase a ticket for entrance into the stadium.

## **ADMISSION & PROGRAMS**

Admission can be purchased onsite and [online](#). Tickets are \$30 for Adults, \$25 for Military, \$20 for Children 5-12 years and Free for Children 5 and under. Programs are \$10. Additional information:

- Cash and Credit Card Accepted at gate
- Tickets are good for both days at all venues
- 1 wristband per person
- **Keep your wristbands on for access on both days**
- Price stays the same whether you buy on Saturday or Sunday
- Each ticket will come with a wristband
  - If you bought online, please head to the pre-purchased line to get a wristband

## **WARM UP AREAS & SILENT ZONES**

Please refer to the enclosed map. The use of Dr. Beats with speakers (e.g. Megavox, Long Ranger), jam blocks, or other time keeping devices, and the use of megaphone/amplification devices cannot interfere with the performances occurring in the stadium. Any band using these devices during their warm-up and disrupting a competing band in the stadium will face a ONE POINT penalty to be assessed by the Chief Adjudicator. Please respect your surroundings.

## **PROP PRE-STAGING AREA**

Please make sure you have adequate staff and means to assist the moving of your percussion equipment and props to and from the performance area. See map for staging location. **Motorized vehicles are NOT allowed on the field turf at any time!**

## **WARM-UP AREA**

Please refer to the map. Please play away from the stadium out of courtesy to the other performing ensembles. Please stay in the labeled warm-up zone only!

## **STAFF VIEWING & SOUND MIXING AREA**

An area will be reserved at the 50-yard line by the press box. There is no access from the field into the stands. Please have your WBA credential visible.

## **ADJUDICATION COMMENTS**

Commentary will be provided through Competitions Suite.

## **AWARDS CEREMONY**

### **Grand Championships Finalists**

The top 5 highest scoring schools in each class plus the next 10 highest scoring schools regardless of class on Saturday, November 18, 2023 advance to Grand Championships. The performance order for Grand Championships will be determined by reverse order from the Class Championships scores regardless of class (lowest will go first and highest will go last). In the event of a tie, an additional school will be invited to perform in Grand Championships.

### **Grand Championships (Sunday, November 19, 2023):**

All Schools – please report to the Band Entrance Gate no later than 6:00pm

As a way to celebrate another great season for WBA, we ask that all performers participate in this Full Retreat Ceremony. Performers should report in full uniform without instruments and equipment. Please refer to the enclosed Full Retreat Map and line-up as directed the WBA Staff.

The awards given during this ceremony are as follow:

- 1st Place, 2nd Place and 3rd Place will receive Medals
- 1st Place will receive a Championship Banner
- Best Music: Music Individual + Music Ensemble
- Best Visual: Visual Individual + Visual Ensemble
- Best Effect: Effect Music + Effect Visual
- Best Color Guard: Color Guard
- Best Percussion: Percussion

### **ANNOUNCER**

The announcer will be on track, using a WBA PA system, not using the stadium PA.

### **CRITIQUE**

There will not be Critique available at this event.

### **ADJUDICATORS & EVENT STAFF**

Parking for adjudicators and WBA staff will be in Parking Lot 8, by the Sacramento State Alumni Association Building Parking.

### **HOSPITALITY**

Hospitality will be provided at this event. NW Deck - Press Box (elevator will be available for you to use). Access is permitted for WBA Director, Staff, and All Access Credentials Only. **Please do not attempt to access any of the press box rooms or the roof of the press box, these areas are strictly off limits.**

### **FIELD SETUP & HASH MARKS**

Yard markers will be setup on both sides of the field. An extension cord with power will be provided at the front sideline on the 50 yardline. The stadium has an artificial turf field with college hash marks. We will place the high school hash marks on the field with tape.

## **RESTROOMS**

In the stadium under both sides of the bleachers and portables lot 10 for the ensembles (corner of Coulter Pine Way and Callery Pear Way) please refer to the map. Note - there are portables outside the gate behind the visitor stands, those will not be in use for this Event as well as the portable inside behind the home stands along the fence. Restrooms in the trailers behind home and visitor stands will be open.

## **SPECTATOR SEATING**

All seating is general admission seating and open for spectators, minus areas blocked off.

## **STUDENT & CHAPERONE SEATING**

At check-in, you will receive wristbands for your ensemble. There is room for your band to sit on the home side, but please sit on the outsides.

## **TRASH & RECYCLE DISPOSAL**

Every effort is made to provide trash containers that are easy to locate and accessible. Please remind your students to use these receptacles when disposing of all trash. Also, you may use the recycle bins located throughout the campus.

## **TOBACCO AND ALCOHOL BEVERAGES**

Absolutely no smoking or alcoholic beverages are permitted on the premises at any time. Please review this very important rule with your students, staff and booster parents.

## **HEALTH & SAFETY**

Basic first aid is available behind the home stands near the band exit. For moderate issues, call Campus Police (916) 278-6000. For severe emergencies, call 911. The nearest hospital is UC Davis Medical Center 2315 Stockton Blvd, Sacramento, CA 95817.

## **LOST & FOUND**

Found items can be picked up in the box office.

## **CONCESSIONS**

The Concession Stands open at xx:xx am. There will be an assortment of Food Trucks for participants and spectators, located in the stadium. Food, Beverages, and Coolers are prohibited in the stadium. **NO GRILLS OR OPEN FIRES ARE ALLOWED ON CAMPUS, STADIUM, OR PARKING LOTS.** Cash and Credit Card Accepted.

## **MERCHANDISE**

PepWear will be onsite selling Championships souvenir and apparel. Cash and Credit Cards will be accepted.



## **PHOTOGRAPHY & VIDEO**

WBA has been advised that the director's educational copy provided to each group at past championships is contrary to the position of music rights holders and licensing agencies who represent them. There remain unresolved legal questions with regards to "fair use" in this situation. WBA has decided not to provide educational copies to groups participating at this year's championships until further discussions can occur in the hopes of finding a solution that is acceptable to all parties.

Any liability associated with unauthorized recordings will rest with the individual or organization making the recording. WBA does not condone, nor accept any liability for, any unauthorized recording during the event.

Use of cameras of any kind are NOT ALLOWED on the field for this event. Please communicate this to your parent/booster group.

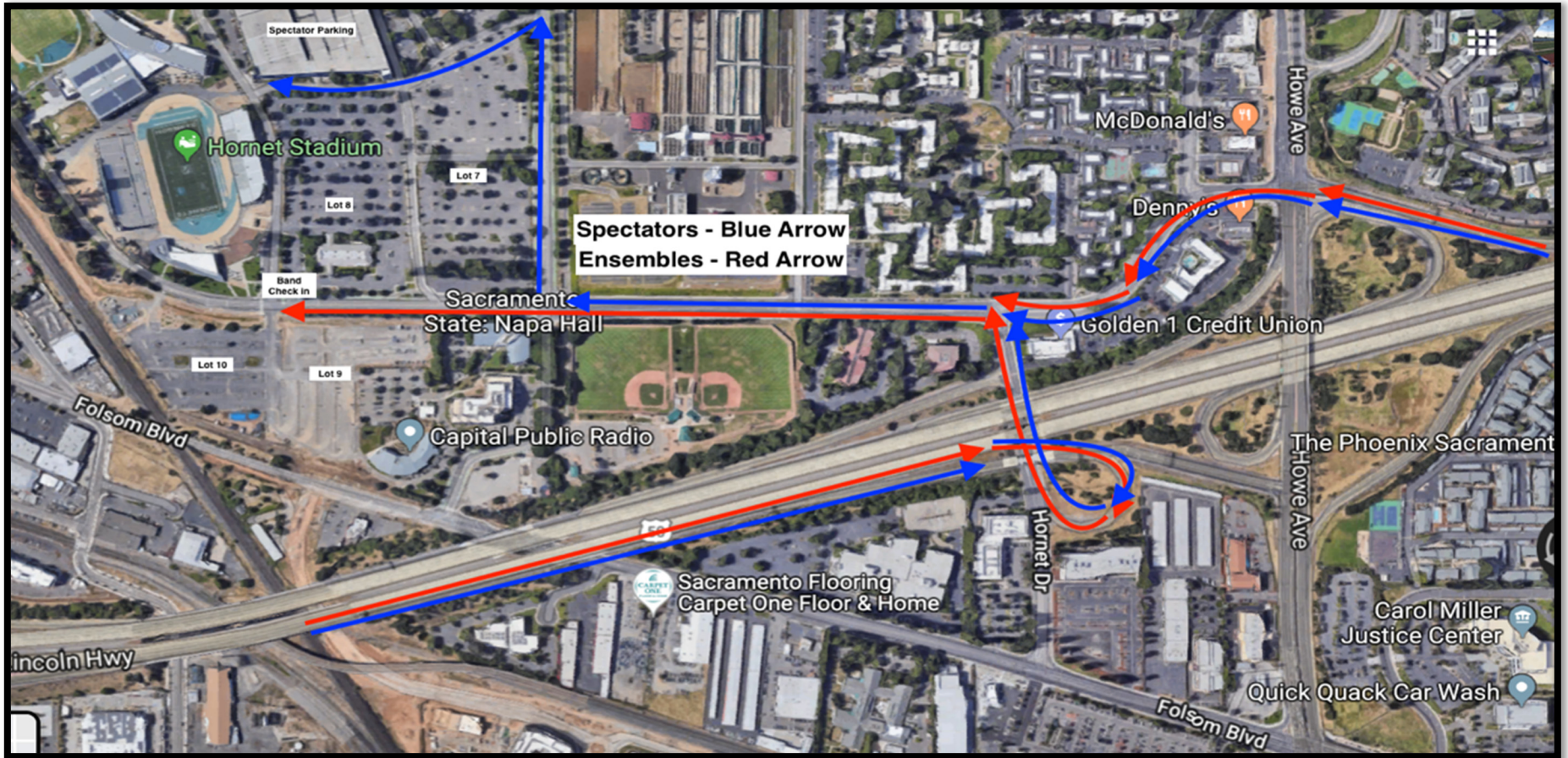
Still cameras (digital or film, professional or otherwise) are allowed into the stadium and may be used from stadium seating, but not on the field, by a person with a WBA Media credential.

Tripods or other similar equipment that may obstruct the view or path of travel of others in seating areas are not allowed.

## **AIRGRAMS**

Airgrams will not be sold at this event.





**ROAD CLOSED**

**GUARD ONLY WARM UP**

**SPECTATOR PARKING - STRUCTURE #3**

**WARM UP**

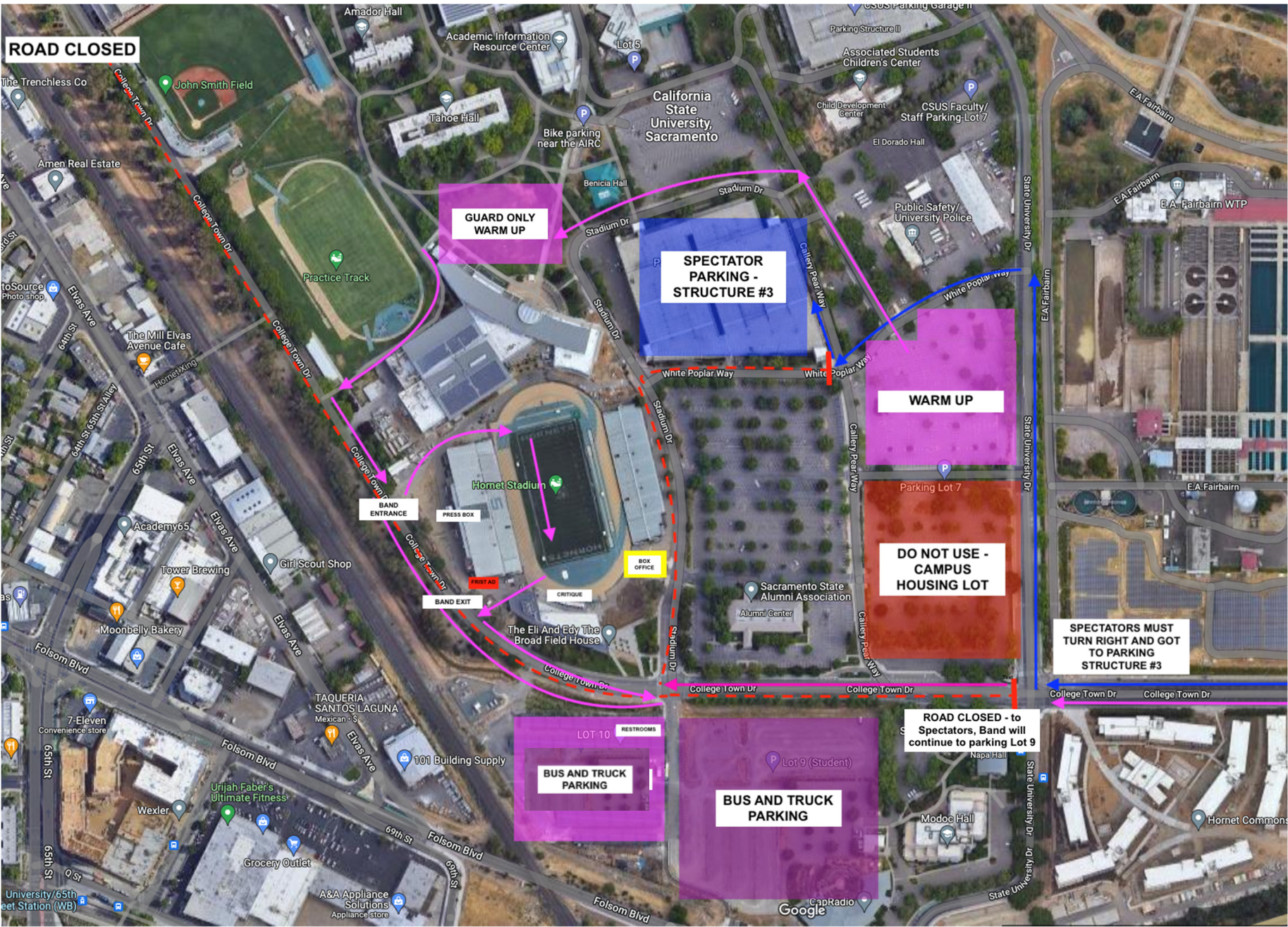
**DO NOT USE - CAMPUS HOUSING LOT**

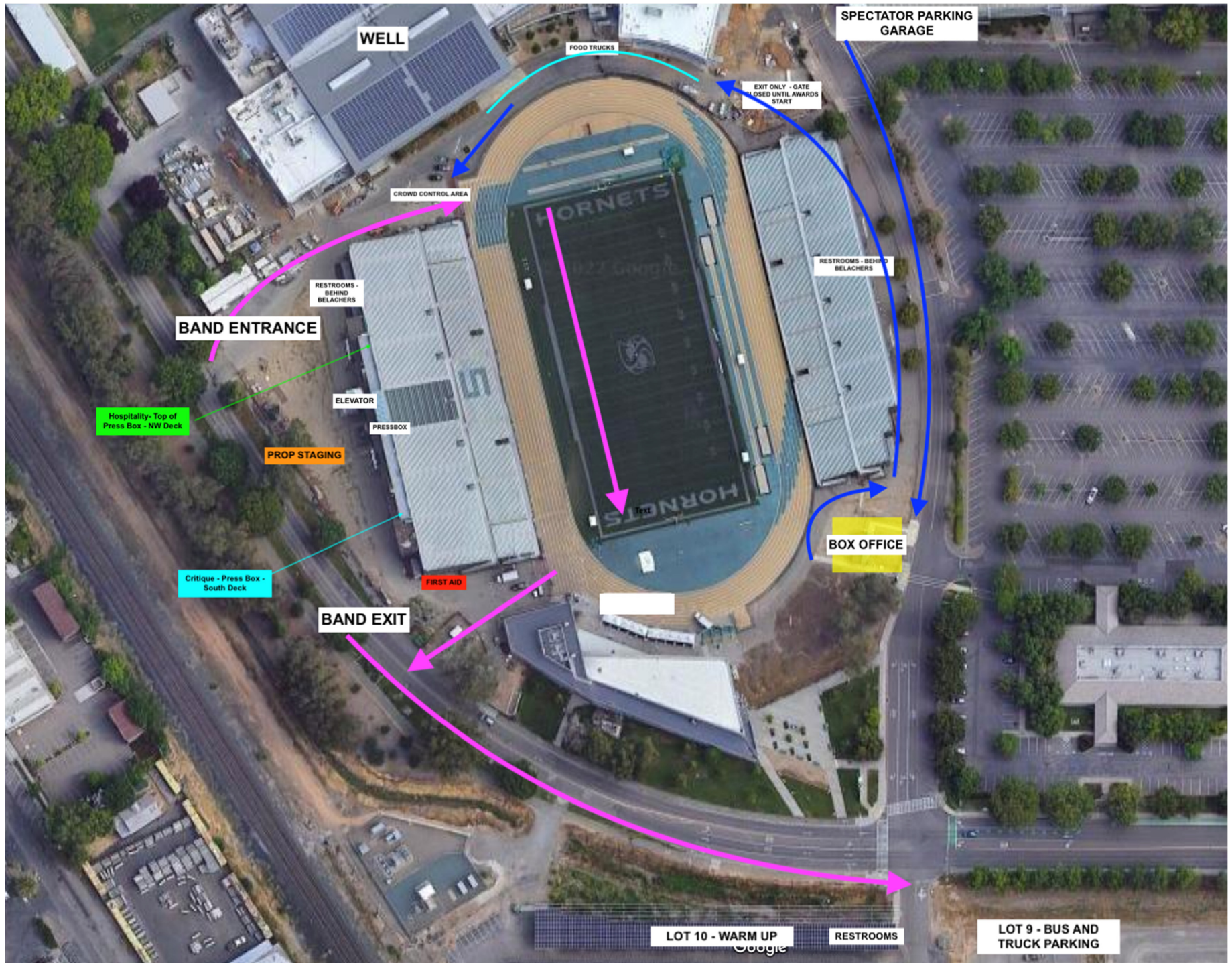
**SPECTATORS MUST TURN RIGHT AND GOT TO PARKING STRUCTURE #3**

**ROAD CLOSED - to Spectators, Band will continue to parking Lot 9**

**BUS AND TRUCK PARKING**

**BUS AND TRUCK PARKING**





WELL

FOOD TRUCKS

SPECTATOR PARKING GARAGE

EXIT ONLY - GATE CLOSED UNTIL AWARDS START

CROWD CONTROL AREA

RESTROOMS - BEHIND BELACHERS

BAND ENTRANCE

Hospitality - Top of Press Box - NW Deck

ELEVATOR

PRESSBOX

PROP STAGING

Critique - Press Box - South Deck

FIRST AID

BAND EXIT

BOX OFFICE

LOT 10 - WARM UP

RESTROOMS

LOT 9 - BUS AND TRUCK PARKING