



**PRELIMS**

**INFO**



# SCPA Championship Prelims

## Participant Information

---

### Welcome to SCPA Championship Prelims for PSCA & PSA!

#### Event Location

[Chino Hills High School](#)

16150 Pomona Rincon Rd.  
Chino Hills, CA 91709

#### Face Coverings

[Per state guidelines](#), masks are strongly recommended in indoor public settings.

#### Tickets and Seating

This show will be broken into separately-ticketed events to help limit the number of people on campus at one time. Each event is self-contained and will require a different ticket/wristband.

Tickets for each Prelims / Semifinals event are \$20 and are all general admission. The box office and gym doors open 30 minutes before each event. Seats are available on a first-come, first-served basis. Children five and under are free. No food or drink will be permitted inside the gym.

#### Video and Photos

Tripods and/or monopods are prohibited in the stands. No video/audio recording is permitted. Still photography (without a flash) is welcome for personal, non-commercial use.

#### Spectator Parking

All spectators and staff vehicles will park in the designated spectator parking lot (see campus diagram).

#### Truck & Bus Parking

Ensemble parking is guaranteed for buses, trucks, semis, and carpool vehicles carrying six (6) or more performers. Due to lot capacity, all other vehicles must park in the designated spectator lot on a first-come, first-served basis. No motorhomes are allowed at SCPA events.

Trucks and buses must arrive and unload at their designated time (see schedules and diagrams).

Trucks are encouraged to leave immediately after they have been reloaded (following your performance and group photo). Buses may remain until the end of each awards ceremony. All trucks, buses, and carpool vehicles must vacate the parking lot within 60 minutes of the awards ceremony for your ensemble's event block to make room for other ensembles.

*If you plan to feed your ensemble during the event, please do so in a remote space on campus or off-site. The truck/bus lots are for loading and unloading only.*

There will be no overnight parking at this event. Please make alternate arrangements.

#### Ensemble Warm-Up

All warm-up will take place according to the logistics schedule and in designated areas on campus (see schedules and diagrams). Warm-up in other areas on campus or at other times is prohibited. Floor tarps (both "practice" and "performance") are not to be pulled out during Championships warm-up. *All equipment must be removed from the warm-up area before you depart for your performance.*

#### Designated Staff & Floor Crew Locations

Seating for a sound engineer and two key staff members will be available high in the viewing area. The remainder of the staff and floor crew must sit in the designated space low in the viewing area. There will be exactly three (3) seats "up top" and eighteen (18) "down low". Coordinate staff seating arrangements before arrival.

Staff members are asked not to rush up and down the stairs as this is a distraction to the audience and

adjudicators. There is to be no sitting on the stairs or aisles.

The staff viewing areas are reserved for staff of the currently performing ensemble. Please remain seated for the duration of your ensemble's performance. After your ensemble has performed, please find an alternate seating location to enjoy other performances.

### **Ensemble Photo**

After your performance, proceed to the floor folding area, where you'll have one interval time to fold your floor. Please be mindful of time, as another ensemble will be out shortly. Then, proceed to the ensemble photo area nearby and place your equipment out of the way of other ensembles. Once you've taken your photo, return your equipment to the bus/truck lot and load your truck.

### **Awards Retreat**

Retreat for all Prelims rounds will be captains only. Masks are recommended for retreat. All those participating in retreat need to report to the floor folding area immediately following the last performance of each event.

### **Advancing to Semifinals & Finals**

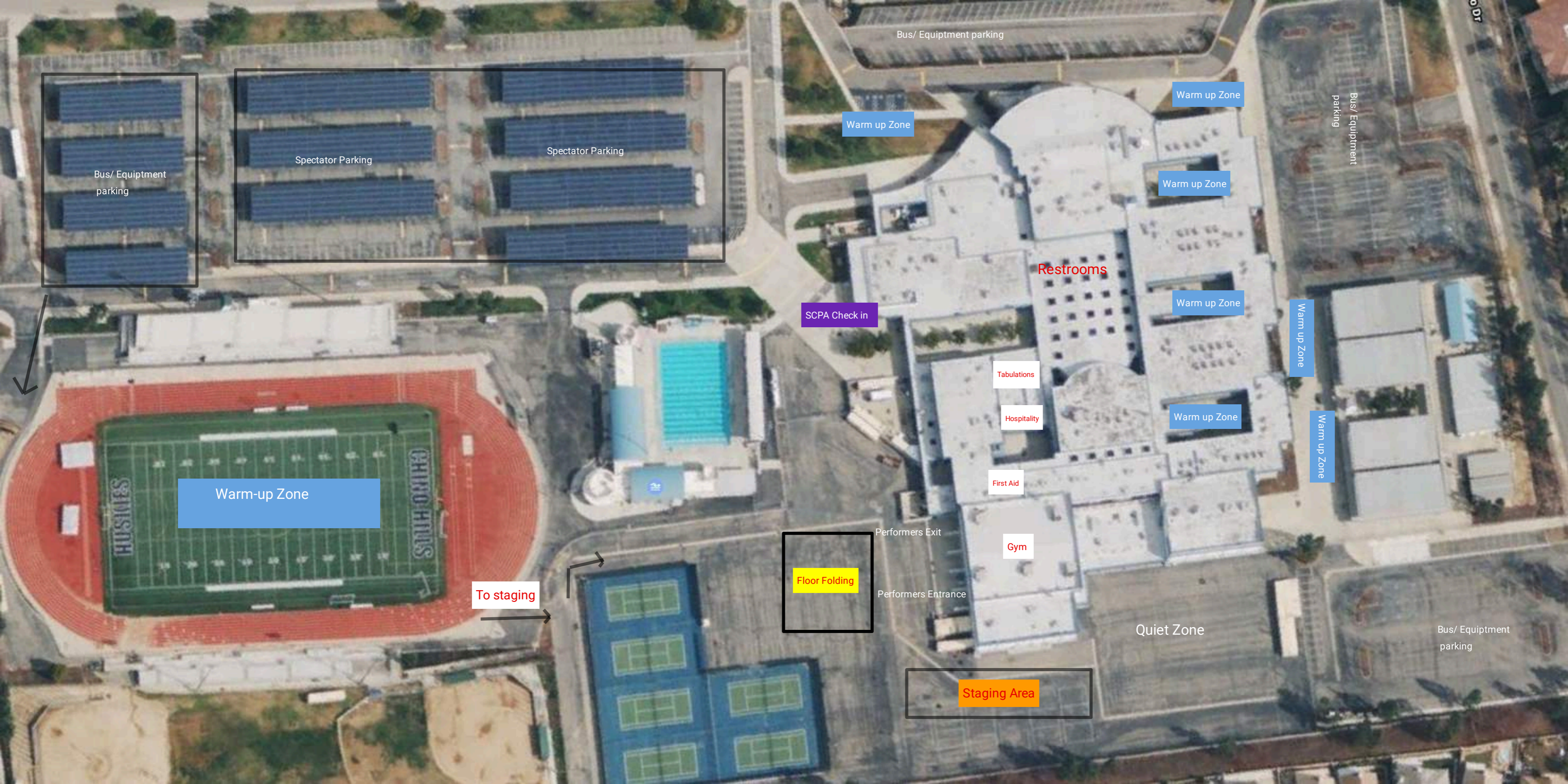
The top three ensembles in each PSA prelims round will advance to Semifinals. The final 12 positions in Semifinals will be filled by wild card ensembles. Rounds 1 and 3 will be adjudicated by the same panel of judges; as such, these scores will be comparable. The next six highest scoring ensembles from Rounds 1 and 3 combined will advance to Semifinals. The same process will be used with Rounds 2 and 4 to select the final six wildcard semifinalists in PSA.

For ensembles hoping to advance to PSA Semifinals via a wildcard position, the final two awards ceremonies of Prelims will be [livestreamed via the SCPA YouTube channel](#).

The top three ensembles in each PSA Semifinals round will advance to Finals. The final six positions in Finals will be filled by the next six highest scoring wildcard ensembles from either round of Semifinals.

The top three scoring ensembles in PSCA will advance to Finals.

Regardless of rank, a minimum gross score of "70.00" must be achieved to advance to Finals.



Bus/ Equipment parking

Spectator Parking

Bus/ Equipment parking

Warm up Zone

Warm up Zone

Bus/ Equipment parking

Warm up Zone

Restrooms

Warm up Zone

SCPA Check in

Warm up Zone

Tabulations

Warm up Zone

Hospitality

Warm up Zone

First Aid

Warm-up Zone

To staging

Floor Folding

Performers Exit

Gym

Performers Entrance

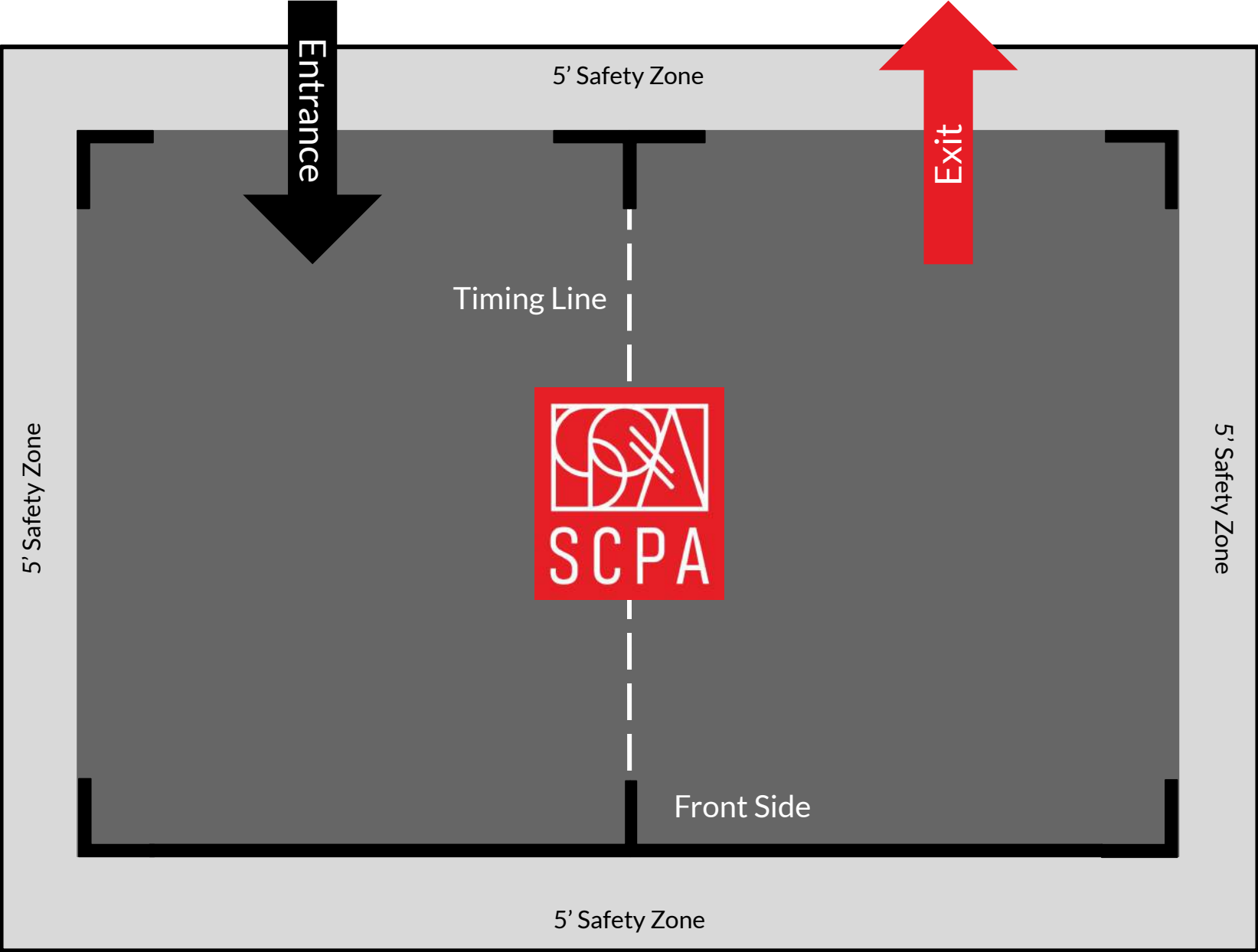
Quiet Zone

Staging Area

Bus/ Equipment parking

# Southern California Percussion Alliance

## Chino Hills HS





# SEMIFINALS

## INFO



# SCPA Championship Prelims

## Participant Information

---

Welcome to SCPA Championship Prelims for PSCO, PSCW, PSO, & PSW, Finals for PSJ, Semifinals for PSA, and Prelims for PIA, PIO, & PIW!

### Event Location

[Great Oak High School](#)

32555 Deer Hollow Way  
Temecula, CA 92592

### Face Coverings

[Per state guidelines](#), masks are strongly recommended in indoor public settings.

### Tickets and Seating

This show will be broken into separately-ticketed events to help limit the number of people on campus at one time. Each event is self-contained and will require a different ticket/wristband.

Tickets for each Prelims / Semifinals event are \$20 and are all general admission. The box office and gym doors open 30 minutes before each event. Seats are available on a first-come, first-served basis. Children five and under are free. No food or drink will be permitted inside the gym.

### Video and Photos

Tripods and/or monopods are prohibited in the stands. [No video/audio recording is permitted](#). Still photography (without a flash) is welcome for personal, non-commercial use.

### Spectator Parking

All spectators and staff vehicles will park in the designated spectator parking lot. Overflow parking is available across the street in the satellite Pechanga parking lot (see diagrams).

### Truck & Bus Parking

Ensemble parking is guaranteed for buses, trucks, semis, and carpool vehicles carrying six (6) or more performers. Due to lot capacity, all other vehicles must

park in the designated spectator lot on a first-come, first-served basis. [No motorhomes are allowed at SCPA events](#).

Trucks and buses must arrive and unload at their designated time (see schedules and diagrams).

Trucks are encouraged to leave immediately after they have been reloaded (following your performance and group photo). Buses may remain until the end of each awards ceremony. [All trucks, buses, and carpool vehicles must vacate the parking lot within 60 minutes](#) of the awards ceremony for your ensemble's event block, to make room for other ensembles.

*If you plan to feed your ensemble during the event, please do so in a remote space on campus or off-site. The truck/bus lots are for loading and unloading only.*

There will be no overnight parking at this event. Please make alternate arrangements.

### Ensemble Warm-Up

All warm-up will take place according to the logistics schedule and in designated areas on campus (see schedules and diagrams). Warm-up in other areas on campus or at other times is prohibited. Floor tarps (both "practice" and "performance") are not to be pulled out during Championships warm-up. *All equipment must be removed from the warm-up area before you depart for your performance.*

### Designated Staff & Floor Crew Locations

Seating for a sound engineer and two key staff members will be available high in the viewing area. The remainder of the staff and floor crew must sit in the designated space low in the viewing area. There will be exactly three (3) seats "up top" and eighteen (18)

“down low”. Coordinate staff seating arrangements before arrival.

Staff members are asked not to rush up and down the stairs as this is a distraction to the audience and adjudicators. There is to be no sitting on the stairs or aisles.

The staff viewing areas are reserved for staff of the currently performing ensemble. Please remain seated for the duration of your ensemble’s performance. After your ensemble has performed, please find an alternate seating location to enjoy other performances.

### **Ensemble Photo**

After your performance, proceed to the floor folding area, where you’ll have one interval time to fold your floor. Please be mindful of time, as another ensemble will be out shortly. Then, proceed to the ensemble photo area nearby and place your equipment out of the way of other ensembles. Once you’ve taken your photo, return your equipment to the bus/truck lot and load your truck.

### **Awards Retreat**

Retreat for all Prelims rounds will be captains only. Retreat for PSJ Finals will be a full retreat for all performing members. Masks are recommended for retreat.

All those participating in retreat need to report to the floor folding area immediately following the last performance of each event. The three PSJ ensembles will leave their equipment near the floor folding area and return it to their truck after awards.

For PSJ ensembles, celebrations of accomplishments and the distribution of medals will need to take place outside this year following the reading of scores.

### **Advancing to Finals**

The top three ensembles in each PSO round will advance to Finals. The final six positions in Finals will be filled by the next six highest scoring wildcard ensembles from either round.

The top three ensembles in each PSA Semifinals round will advance to Finals. The final six positions in Finals will be filled by the next six highest scoring wildcard ensembles from either round of Semifinals.

The top scoring ensembles in PIA, PIO, PSCO, PSCW, PSW, and PIW advance to Finals.

Regardless of rank, a minimum gross score of “70.00” must be achieved to advance to Finals.



# GREAT OAK HIGH SCHOOL

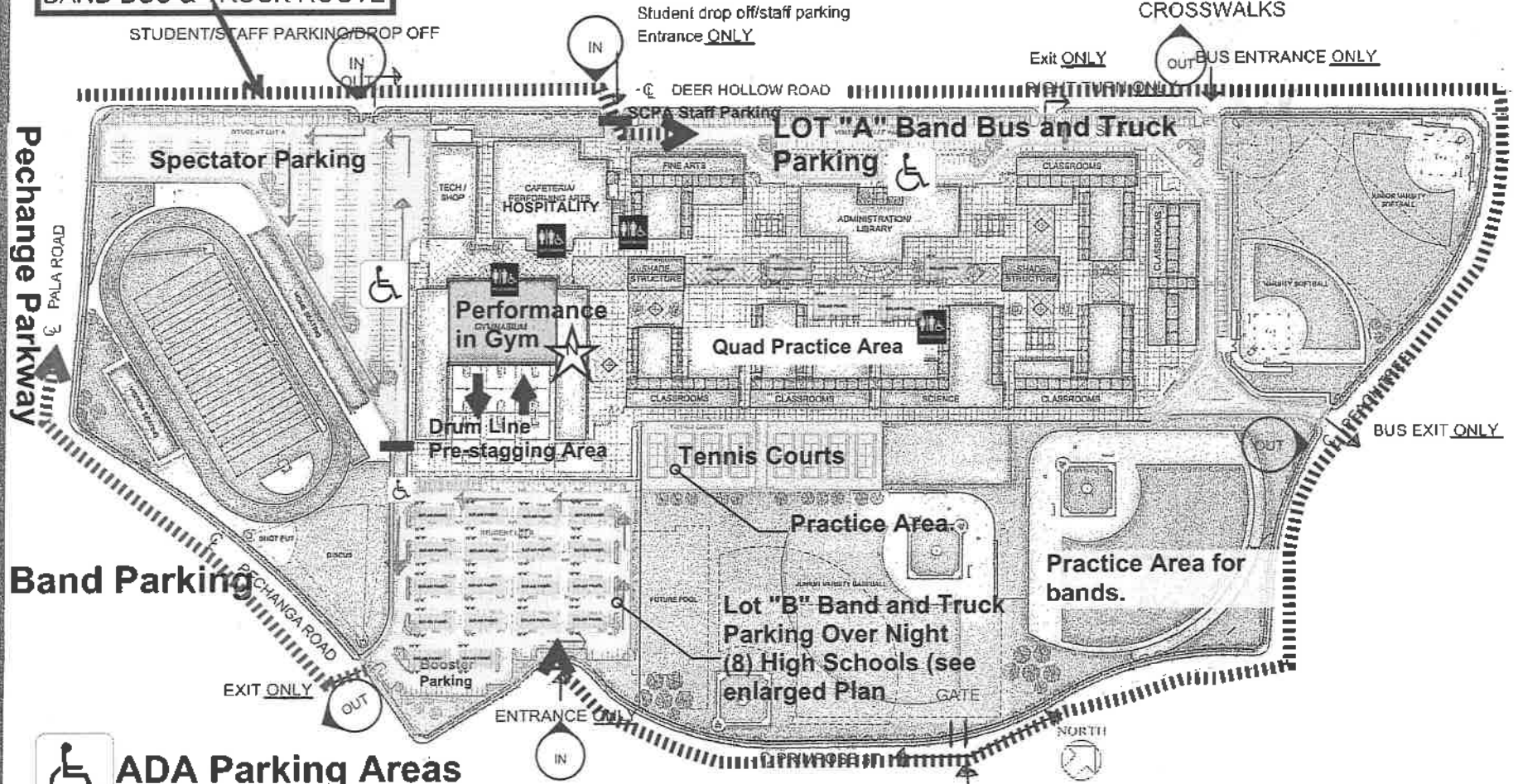
TEMECULA VALLEY UNIFIED SCHOOL DISTRICT

SITE PLAN

## STUDENT/STAFF PARKING/DROP OFF/TRAFFIC FLOW MAP

IF YOU ARE PARKING ACROSS THE ST  
AT THE PARK, BE SURE TO USE THE  
CROSSWALKS

### BAND BUS & TRUCK ROUTE



ADA Parking Areas

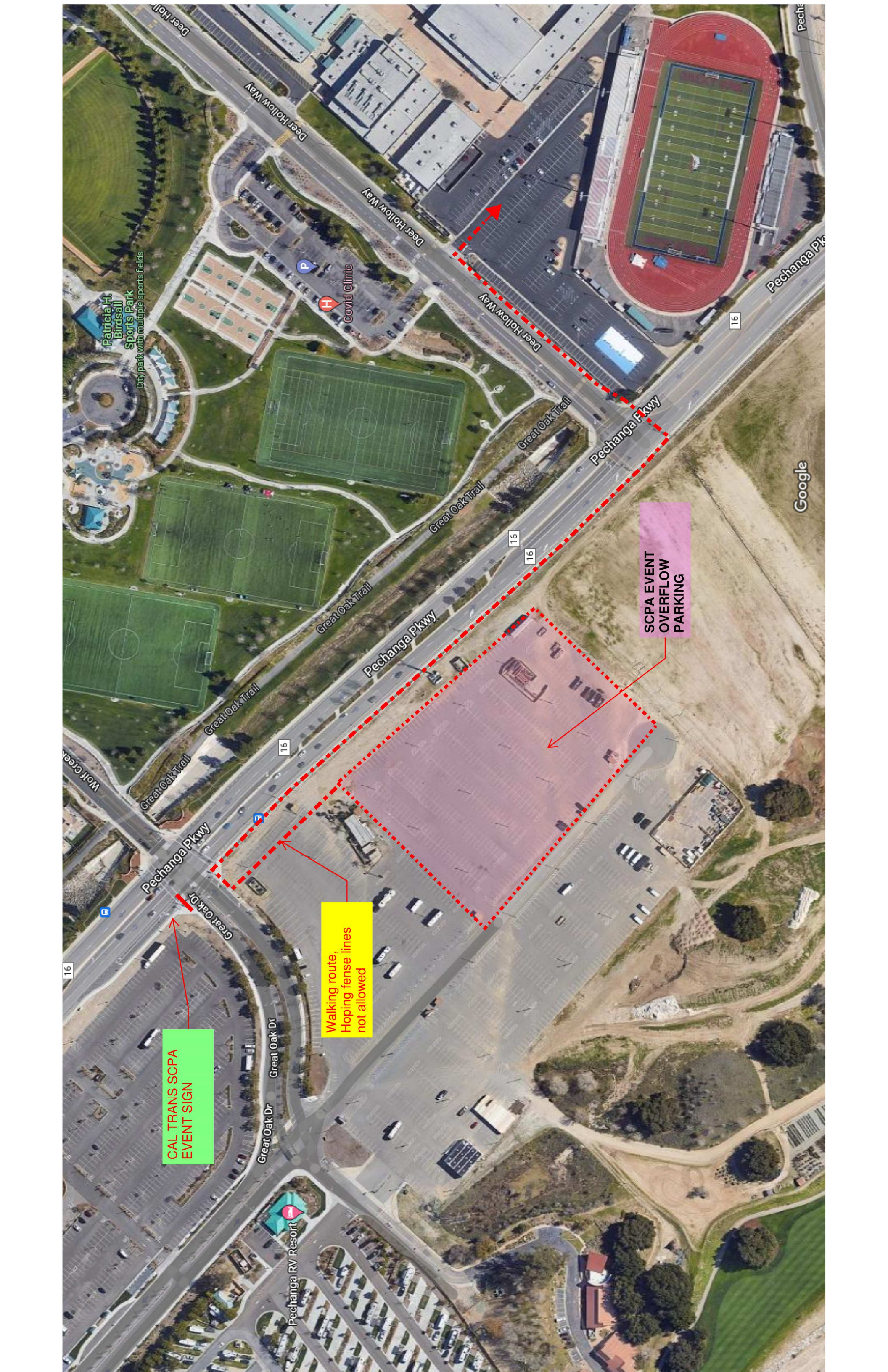
Restrooms

PLEASE FOLLOW TRAFFIC  
DIRECTIONS AND WATCH  
YOUR SPEED

# GUEST MAP & INFORMATION

FRICK, FRICK & JETTÉ  
ARCHITECTS, INCORPORATED  
15337 BONANZA ROAD  
VICTORVILLE, CA 92382  
WWW.FFJ-ARCH.COM





CAL TRANS SCPA  
EVENT SIGN

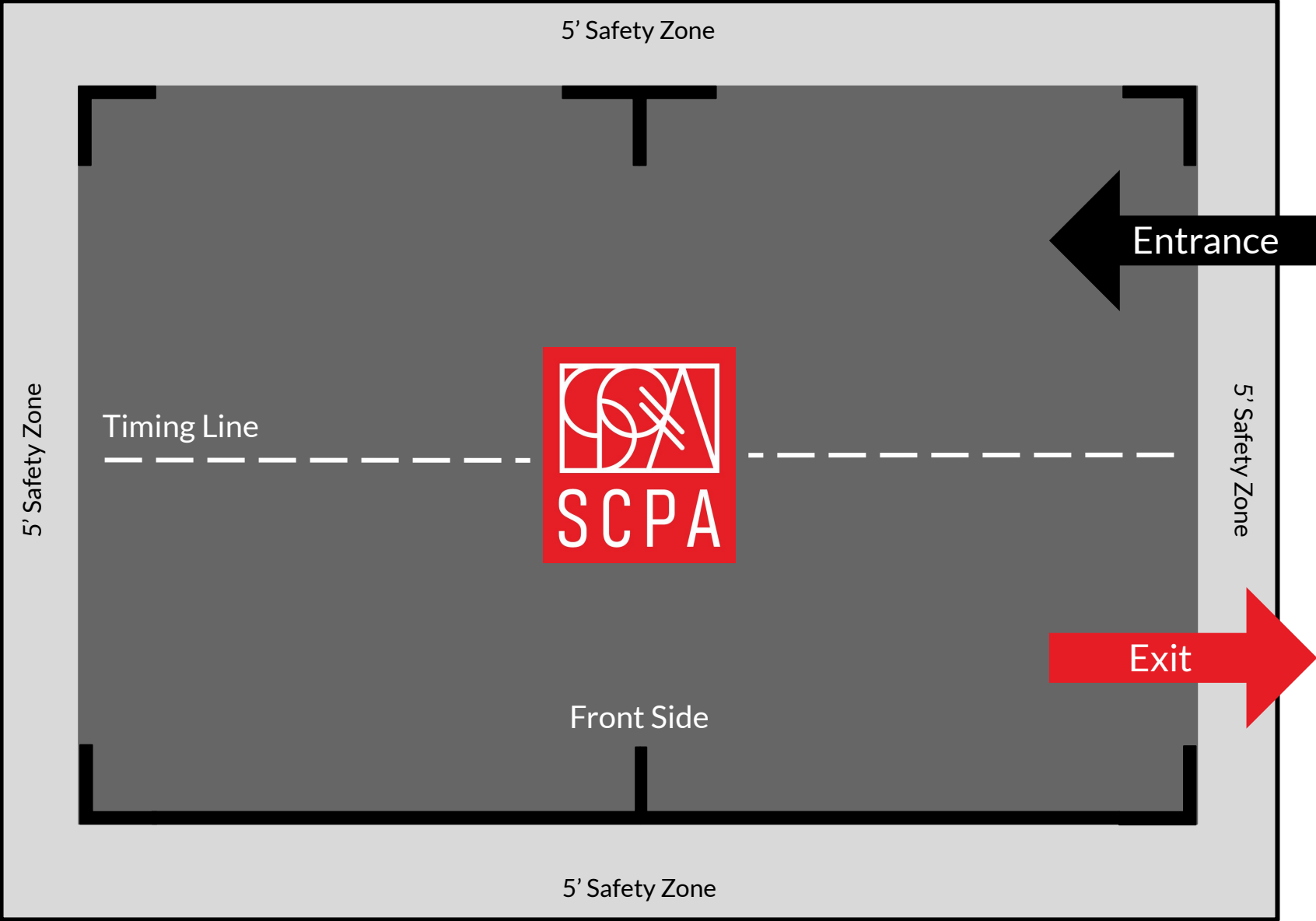
Walking route,  
Hopping fence lines  
not allowed

SCPA EVENT  
OVERFLOW  
PARKING

Google

# Southern California Percussion Alliance

## Great Oak HS





**FINALS**

**INFO**



# SCPA Championship Finals

## Participant Information

---

### Welcome to SCPA Championship Finals!

#### Event Location

[Toyota Arena](#)

4000 Ontario Center  
Ontario, CA 91764

#### Face Coverings

[Per state guidelines](#), masks are strongly recommended in indoor public settings.

#### Tickets and Seating

Ticket prices are \$30, \$40, and \$50 for individually ticketed areas. Reserved tickets are [available for purchase online](#) and at the arena box office. General admission tickets will be \$25 and will be available on the day of the event. There will be additional arena fees for each ticket.

General admission spectators are welcome to sit in the individually ticketed areas until the ticket holder arrives. Children two and under are free if sitting on a parent's lap. Anyone needing a seat will need a ticket.

#### Video and Photos

Tripods and/or monopods are prohibited in the stands. No video/audio recording is permitted. Still photography (without a flash) is welcome for personal, non-commercial use.

#### Arena Policies

Toyota Arena is a cashless venue, conducts entry security screenings, and has a no-bag policy in place. Please review their [guest policies](#) and [code of conduct](#) prior to arrival.

#### Spectator / Staff Parking

All spectators and staff vehicles will park in lots A, B, or C (see diagrams). Parking will be \$25 per vehicle.

#### Truck & Bus Parking

Ensemble parking is guaranteed for buses, trucks, semis, and carpool vehicles carrying six (6) or more performers. All other vehicles must park in the paid spectator lots. Drop-offs cannot be accommodated in the truck/bus parking lot. No motorhomes are allowed at SCPA events.

Trucks and buses must arrive and unload in parking lot F at the designated time (please see schedules and diagrams) and will remain there for the duration of the day. The truck and bus area of lot F is a silent zone.

*If you plan to feed your ensemble you will need to do so using arena concessions\* or do so off-site. As this is a professional arena, there are no "campus areas" at this venue and Toyota Arena prohibits any type of tailgating on their property. Lot F is for loading and unloading only.*

\*Toyota Arena is a cashless venue. A credit card will be required for concessions purchases.

#### Restrooms

Restrooms are available in the arena for those with a wristband/ticket. Portable restrooms are also available in the truck/bus parking lot (F).

#### Ensemble Warm-Up

All warm-up will take place in lot F according to the logistics schedule. Warm-up in other areas or at other times is prohibited. Floor tarps (both "practice" and "performance") are not to be pulled out during Championships warm-up. See diagrams for warm-up orientation. Face your ensemble in the direction indicated by the arrow. *All equipment must be removed from the warm-up area before you depart for your performance.*

### **Warm-Up to Arena Transit**

All performers, instructors, and floor crew members will be subject to metal detector security screening at the top of the entry ramp. Carrying personal bags or other such items will require additional screening. We recommend leaving non-essential items back at the trucks/buses.

Ensembles departing the warm-up area to push to the arena will use gates F3 and E to push to the ramp down to the arena floor. Keep left on the ramp.

Ensembles exiting the floor folding area will keep left when going back up the ramp and use gates D and F2 to push back to the truck/bus parking lot. Please see diagrams.

### **Designated Staff & Floor Crew Locations**

Please see diagrams for the designated sound engineer, staff, and floor crew viewing locations. Seating for a sound engineer and two key staff members will be available high in the viewing area. There will be exactly three (3) seats “up top” and eighteen (18) “down low” for the remainder of the staff and floor crew. Coordinate staff seating arrangements before arrival. Anyone without a seat will be unable to watch the performance.

Staff members are asked not to rush up and down the stairs as this is a distraction to the audience and adjudicators. There is to be no sitting on the stairs or aisles.

The staff viewing areas are reserved for staff of the currently performing ensemble. Please remain seated for the duration of your ensemble’s performance. After your ensemble has performed, please find an alternate seating location to enjoy other performances.

### **Awards Retreat**

Retreat for Finals is a full retreat for all performing members. Masks are recommended for retreat. All those participating in retreat need to report to the floor folding area immediately following the last performance.

*The last three performing PIW ensembles will leave their equipment near the arena and return it to their truck after awards.*

Following the final score announcement, ensembles will be excused to leave the floor one at a time in reverse order of entry. There will be no distribution of medals on the floor or “breaking of ranks” this year. Instead, ensembles are encouraged to celebrate their accomplishments, distribute any medals earned, and take photos *outside* in Lot F. **Please be sure to review these protocols with all of your performers prior to arrival.**

Instructors and parents seated in the spectator area will not have access to the arena floor and will need to exit out of the main doors to return to Lot F.

**SCPA encourages performers to wear any medals previously earned at SCPA or WGI events for Finals retreat.**



Warm-Up  
Area

Truck & Bus  
Parking (F)

Spectator  
Parking (A)

Spectator Parking (B & C)





A B C  
 D E F  
 G H I  
 J K L

Bus & Truck  
 Parking (F)



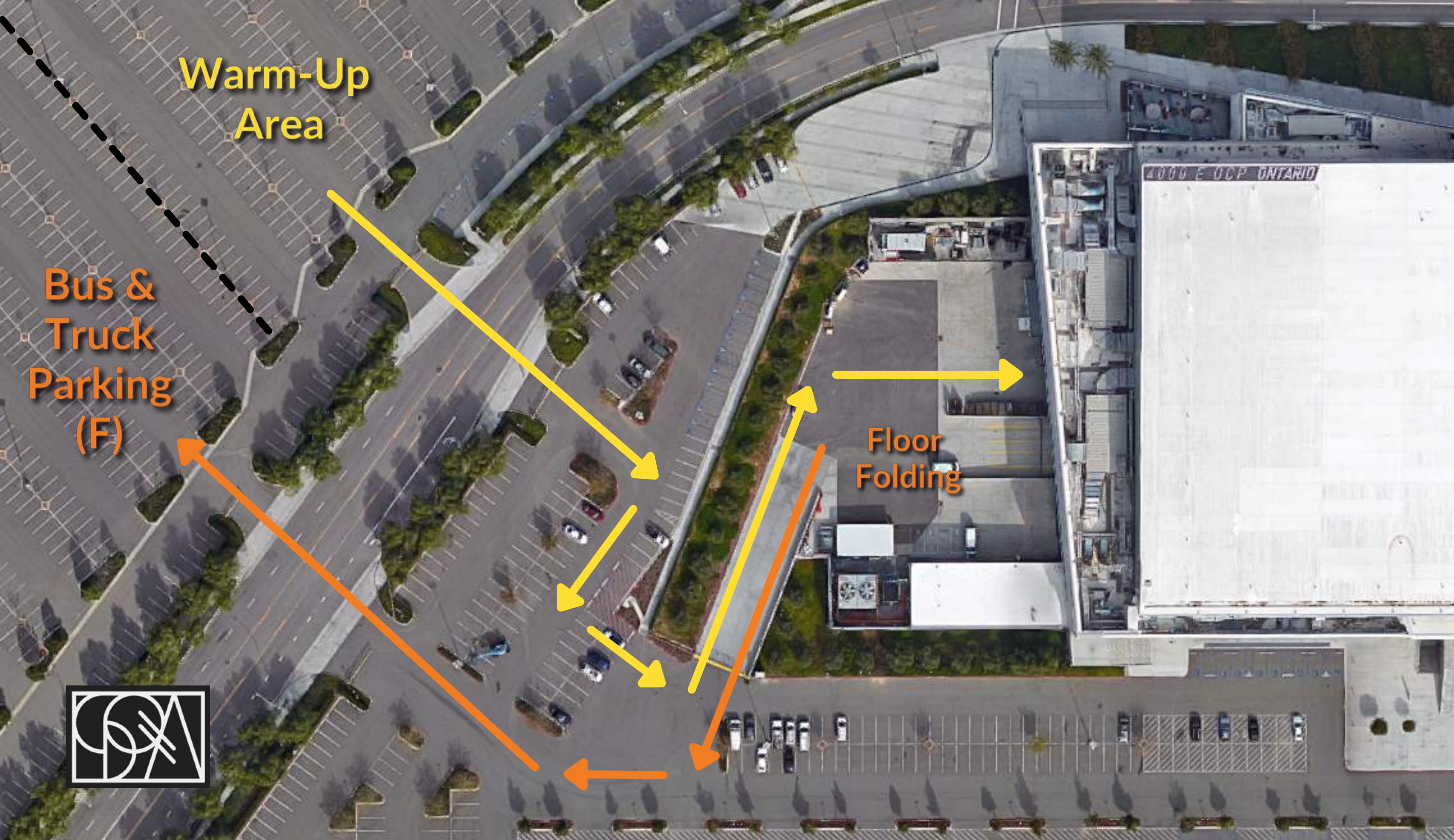
\*Arrow denotes  
 front ensemble /  
 speaker orientation



Warm-Up Area

Bus & Truck Parking (F)

Floor Folding



# Competition Area

(18) Staff &  
Floor Crew Seats

(3) Sound Engineer +  
Two Key Staff Members



# Southern California Percussion Alliance

## Toyota Arena

