

**Saturday, March 11, 2023**  
**2023 Great Oak High School Regional**  
**@ Great Oak High School in Temecula, California**  
**Southern California Percussion Alliance (SCPA)**

**ITINERARY**

<b>TIME</b>	<b>EVENT</b>
8:30 AM	Report & Setup ( <i>Eat a hearty breakfast</i> )
9:00 AM	Rehearsal Begins
11:00 AM	Rehearsal Ends
11:30 AM	Load Trucks Lunch ( <i>students on their own</i> ) Change into uniform after loading
1:30 PM	All Drivers Meet at THHS and Check-In
1:45 PM	Depart from Trabuco Hills High School
3:15 PM	Arrive at Great Oak High School Use Restroom / Stretch
3:46 PM	Unload Trucks
4:15 PM	Tuning / Sectionals
4:45 PM	Full Ensemble Warm-up
5:15 PM	Depart from Warm-up
5:30 PM	Staging Area
<b>5:46 PM</b>	<b>Performance</b>
5:55 PM	Fold Floor & Load Truck
6:45 PM	Dinner ( <i>provided by the boosters</i> )
7:45 PM	In Gymnasium to Watch PSCW & PSW Classes
9:00 PM	Awards
9:30 PM	Depart from Great Oak High School
10:45 PM	Approximate Arrival at Trabuco Hills High School
10:50 PM	Unload Instruments, Equipment and Clean-Up
11:30 PM	Roll-Call & Approximate Dismissal

**STUDENTS WILL NOT BE DISMISSED UNTIL THE TRUCK IS FULLY UNLOADED.  
FEEL FREE TO HELP EXPEDITE THE PROCESS WHILE YOU WAIT FOR THEM.**

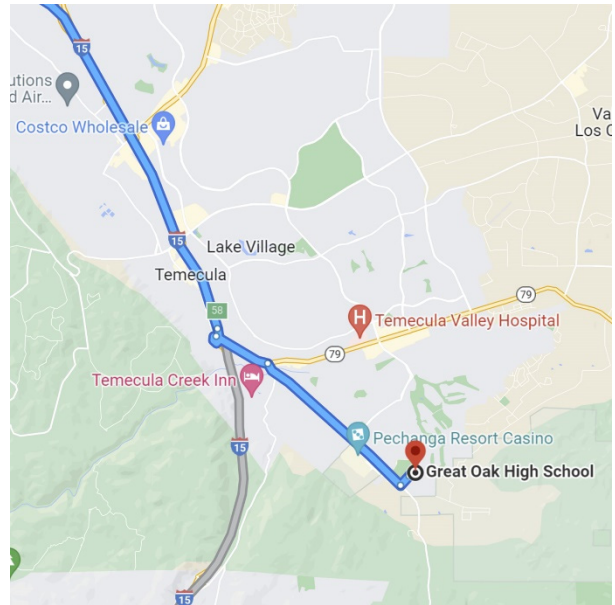
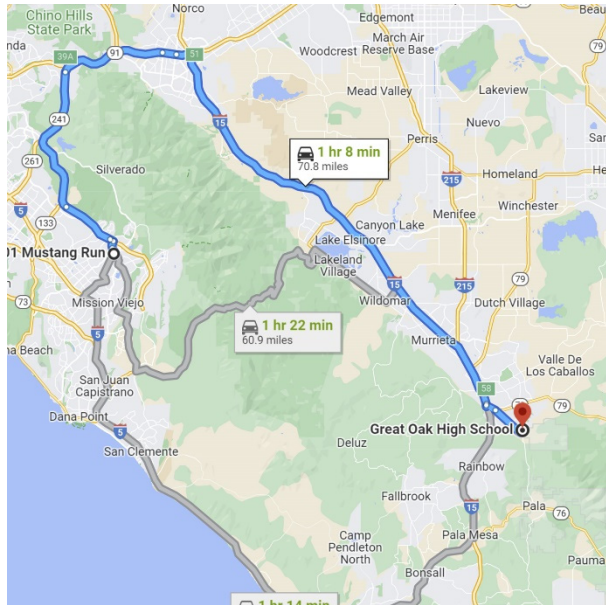
**REMINDERS**

- All SVUSD and Music Program expectations and policies apply while traveling to/from and at the show site.
- Dress Attire: Jeans, Polos Tucked In, Belt, Approved Outwear, No Hats after the performance

**\*\*\* Please keep in mind, no schedule is sacred and always subject to change!!!**



## **DIRECTIONS FROM TRABUCO HILLS HIGH SCHOOL**



**Great Oak High School**  
**32555 Deer Hollow Way**  
**Temecula, California 92592**

Distance: 70.8 miles, Approximate Travel Time: 1 hour 12 mins

### ***Via The Toll Roads***

- Take SR-241 Toll Road North towards Riverside
- The Tomato Springs Toll Plaza is \$4.12 and the Windy Ridge Toll Plaza is \$4.31
- Take SR-91 Freeway East towards Riverside
- Take I-15 Freeway South
- Exit Indio / SR-79 and turn left
- Turn right on Pechanga Parkway
- Turn left on Deer Hollow Way
- Great Oak High School is on your right-hand side

### ***Without The Toll Roads***

- Take I-5 Freeway North towards Santa Ana
- Take SR-55 Freeway North
- Take SR-91 Freeway East towards Riverside
- Take I-15 Freeway South
- Exit Indio / SR-79 and turn left
- Turn right on Pechanga Parkway
- Turn left on Deer Hollow Way
- Great Oak High School is on your right-hand side

**Saturday, March 11, 2023**  
**2023 Great Oak High School Regional**  
**@ Great Oak High School in Temecula, California**  
**Southern California Percussion Alliance (SCPA)**

**Performance Schedule (as of 02/28/23)**

<b>CLASS</b>	<b>UNIT</b>	<b>PERFORM</b>
PSJ	Townsend Junior High School	3:02 PM
PSJ	Buena Park Middle School	3:11 PM
PSJ	Dorothy McElhinney Middle School	3:20 PM
PSJ	Warm Springs Middle School	3:29 PM
PSJ	Rancho Starbuck Intermediate School	3:38 PM
	<b><i>BREAK</i></b>	<b><i>3:47 PM</i></b>
PSA	Palm Desert High School	3:57 PM
PSA	Orange Vista High School	4:06 PM
PSA	Granada Hills CHigh School	4:15 PM
PSA	San Marino High School	4:24 PM
PSA	Chaparral High School	4:33 PM
PSA	Canyon High School (CC)	4:42 PM
PSA	Shadow Hills High School	4:51 PM
PSA	Orange High School	5:00 PM
	<b><i>BREAK</i></b>	<b><i>5:09 PM</i></b>
PSA	Temescal Canyon High School	5:19 PM
PSA	La Cañada High School	5:28 PM
PSA	Great Oak High School	5:37 PM
<b>PSA</b>	<b>Trabuco Hills High School</b>	<b>5:46 PM</b>
PSA	Valhalla High School	5:55 PM
PSA	Rancho Alamitos High School	6:04 PM
PSA	Carlsbad High School	6:13 PM
	<b><i>DINNER BREAK</i></b>	<b><i>6:22 PM</i></b>
PSO	Gahr High School	7:22 PM
PSO	Great Oak High School	7:32 PM
PSCA	Eleanor Roosevelt High School	7:42 PM
PSCW	Ayala High School	7:51 PM
PSCW	Woodbridge High School	8:02 PM
	<b><i>BREAK</i></b>	<b><i>8:13 PM</i></b>
PSW	Vista Murrieta High School	8:23 PM
PSW	Ayala High School	8:34 PM
	<b>AWARDS</b>	<b>9:00 PM</b>

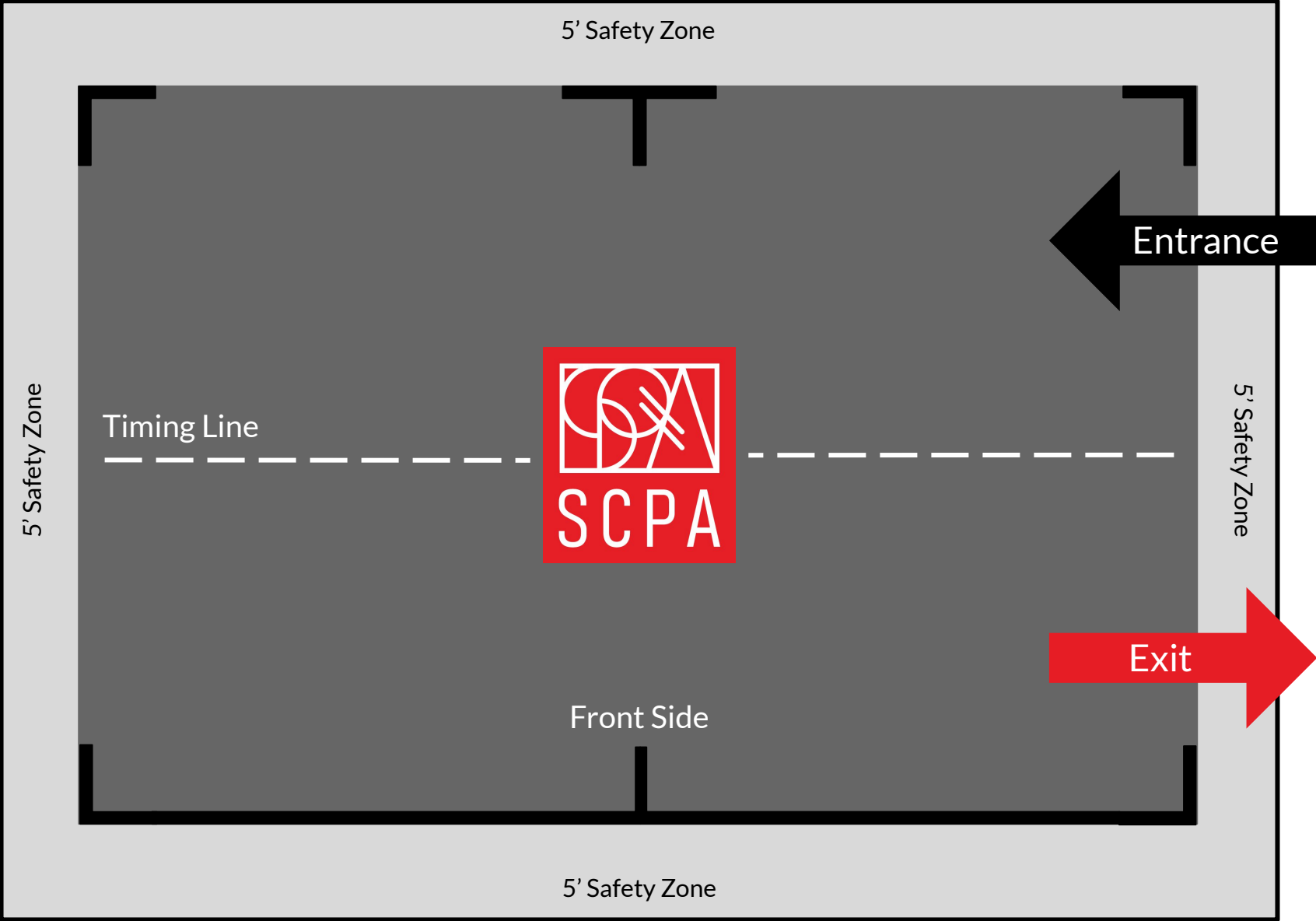
Effect - Music  
Effect - Visual  
Music  
Visual  
Timing & Penalties

Rich Hammond  
Jim Shade  
Jeff Ausdemore  
Jason Harvey  
Alex Gray



# Southern California Percussion Alliance

## Great Oak HS





## Event Information

Great Oak High School

---

### Event Location

[Great Oak High School](#)

32555 Deer Hollow Way  
Temecula, CA 92592

### Tickets

\$12, general admission

- [Tickets are available for purchase online](#) through Eventbrite.
- Prior to entering the gym, spectators will proceed to Spectator Check-In to have their ticket scanned and receive a wristband.
- Seats are available on a first-come, first-served basis.
- Spectator doors will open 30 minutes prior to the start of the show.
- Children five and under are free.

### Performance Schedule

Schedules are typically published a week and a half before the event. As performance times can change, please visit [scpa.live](#) for the most recent version of the performance schedule.

### Spectator Parking

Spectator parking is available in designated parking lots on campus. Additional parking is available on surrounding streets.

### Video and Photos

Tripods and/or monopods are prohibited in the stands. No recording or live streaming is permitted. Still photography (without a flash) is welcome for personal, non-commercial use.

### Spectator Notes

- As this is a performing arts event, we ask that you do not enter or exit the seating area during a performance. Please remain in your seats and keep the aisles clear. Concert etiquette is appreciated.
- Due to United States copyright law, recording or live streaming of this event is strictly prohibited. This policy is at the ensembles' request and we ask that you please honor their wishes.
- Please silence cell phones and other electronic devices while inside the performance venue.

# GREAT OAK HIGH SCHOOL

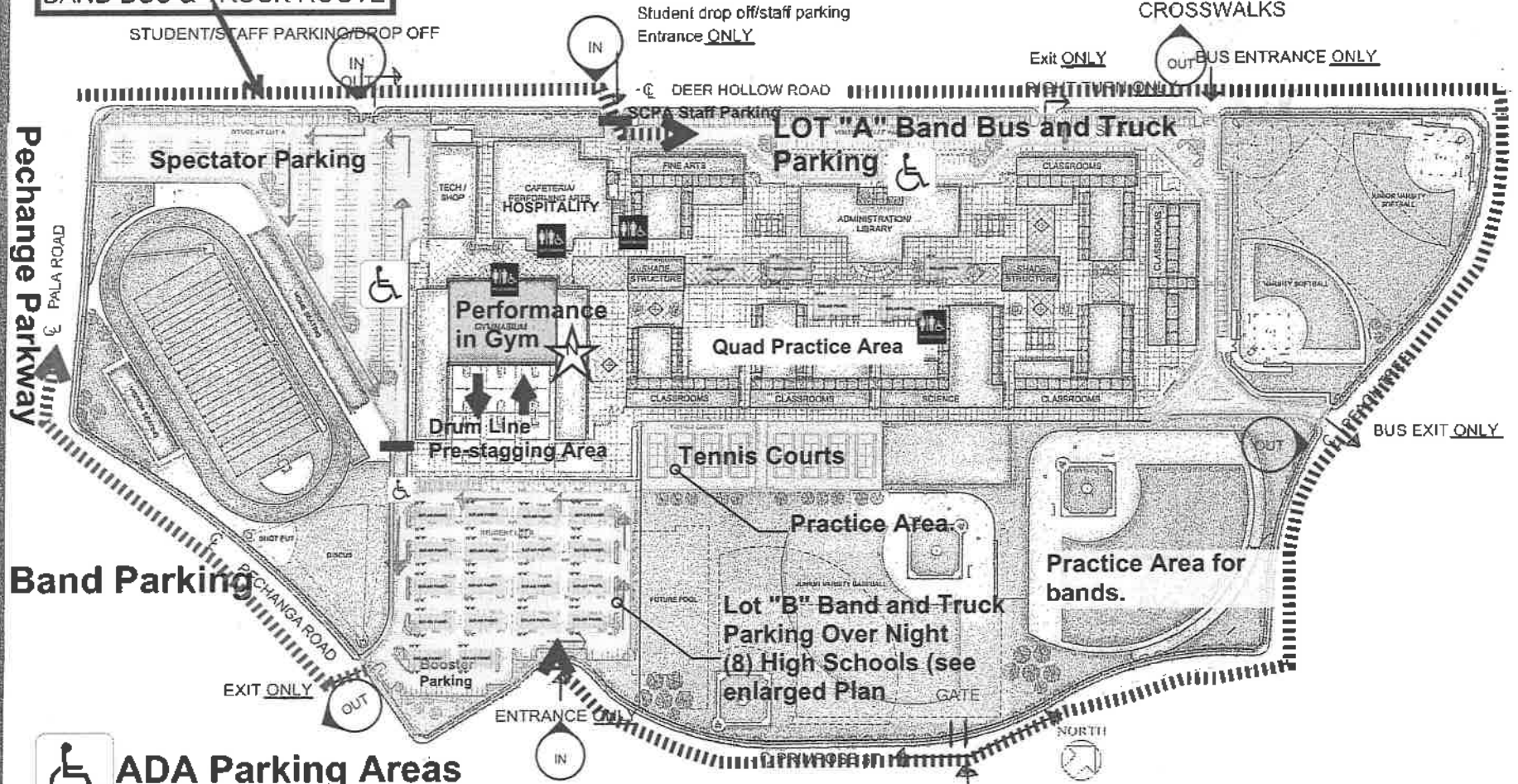
TEMECULA VALLEY UNIFIED SCHOOL DISTRICT

SITE PLAN

## STUDENT/STAFF PARKING/DROP OFF/TRAFFIC FLOW MAP

IF YOU ARE PARKING ACROSS THE ST  
AT THE PARK, BE SURE TO USE THE  
CROSSWALKS

### BAND BUS & TRUCK ROUTE



ADA Parking Areas

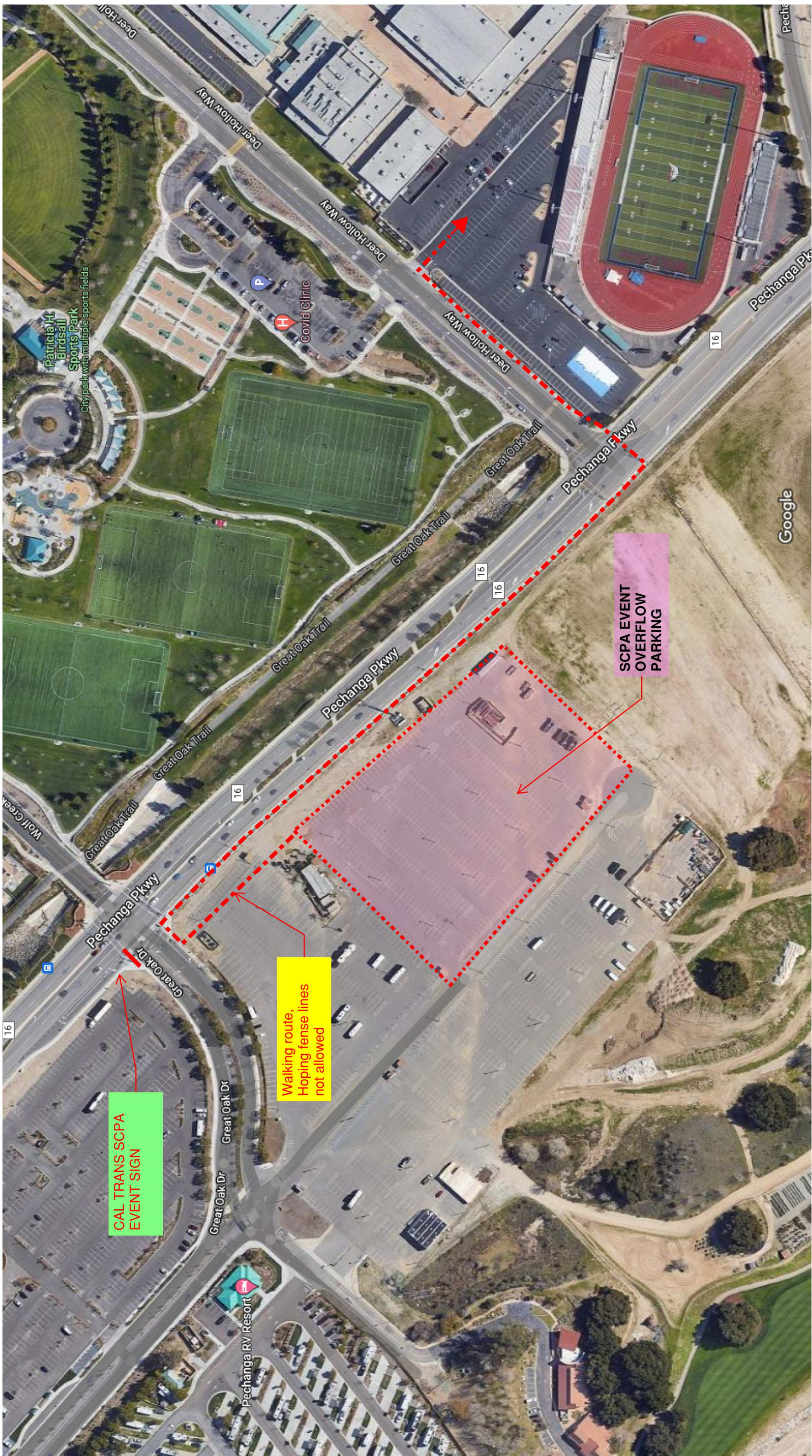
Restrooms

PLEASE FOLLOW TRAFFIC  
DIRECTIONS AND WATCH  
YOUR SPEED

# GUEST MAP & INFORMATION

FRICK, FRICK & JETTÉ  
ARCHITECTS, INCORPORATED  
15337 BONANZA ROAD  
VICTORVILLE, CA 92382  
WWW.FFJ-ARCH.COM





CAL TRANS SCPA  
EVENT SIGN

Walking route,  
Hopping fence lines  
not allowed

SCPA EVENT  
OVERFLOW  
PARKING

Google